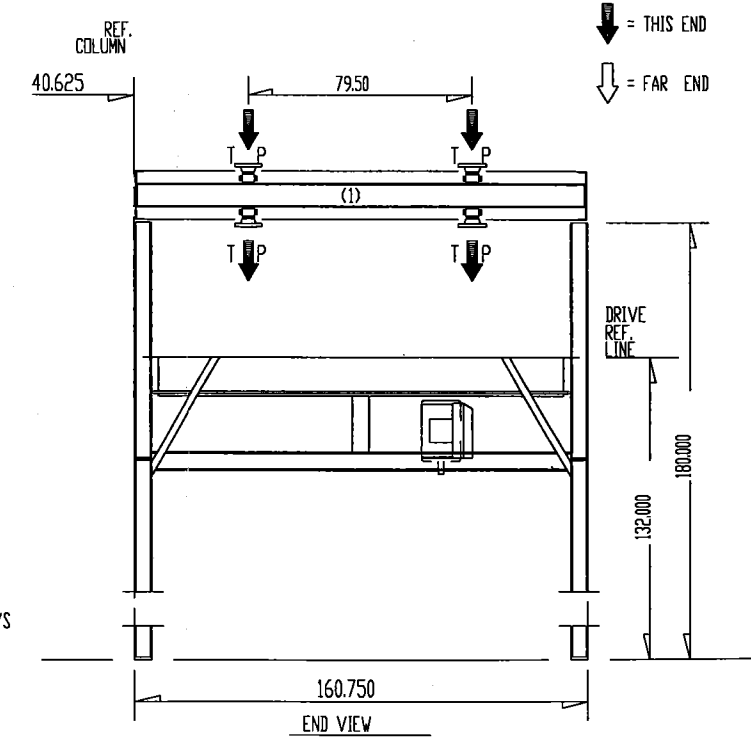
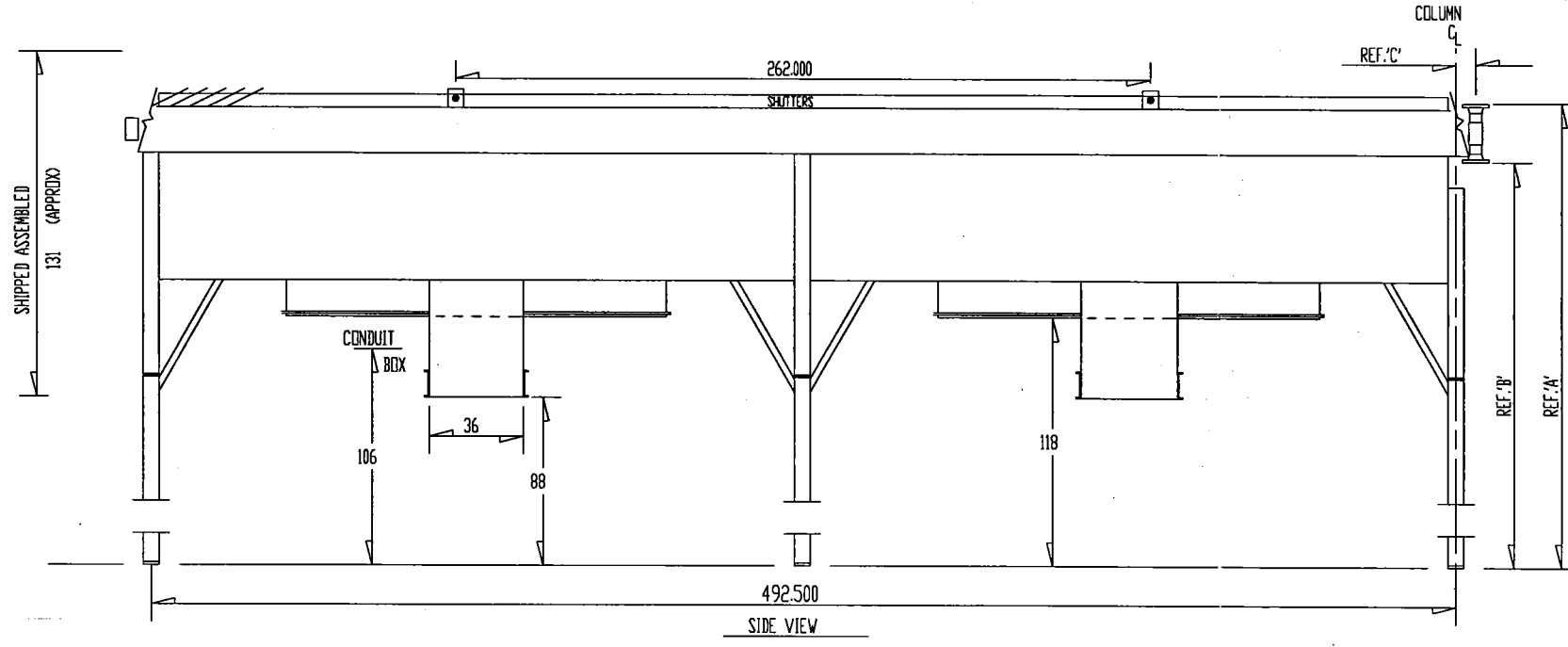
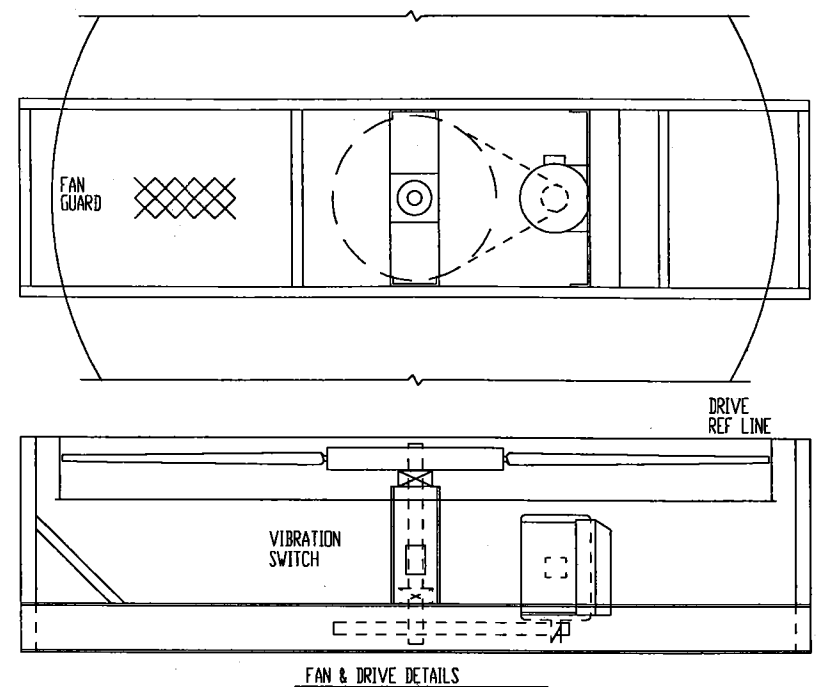
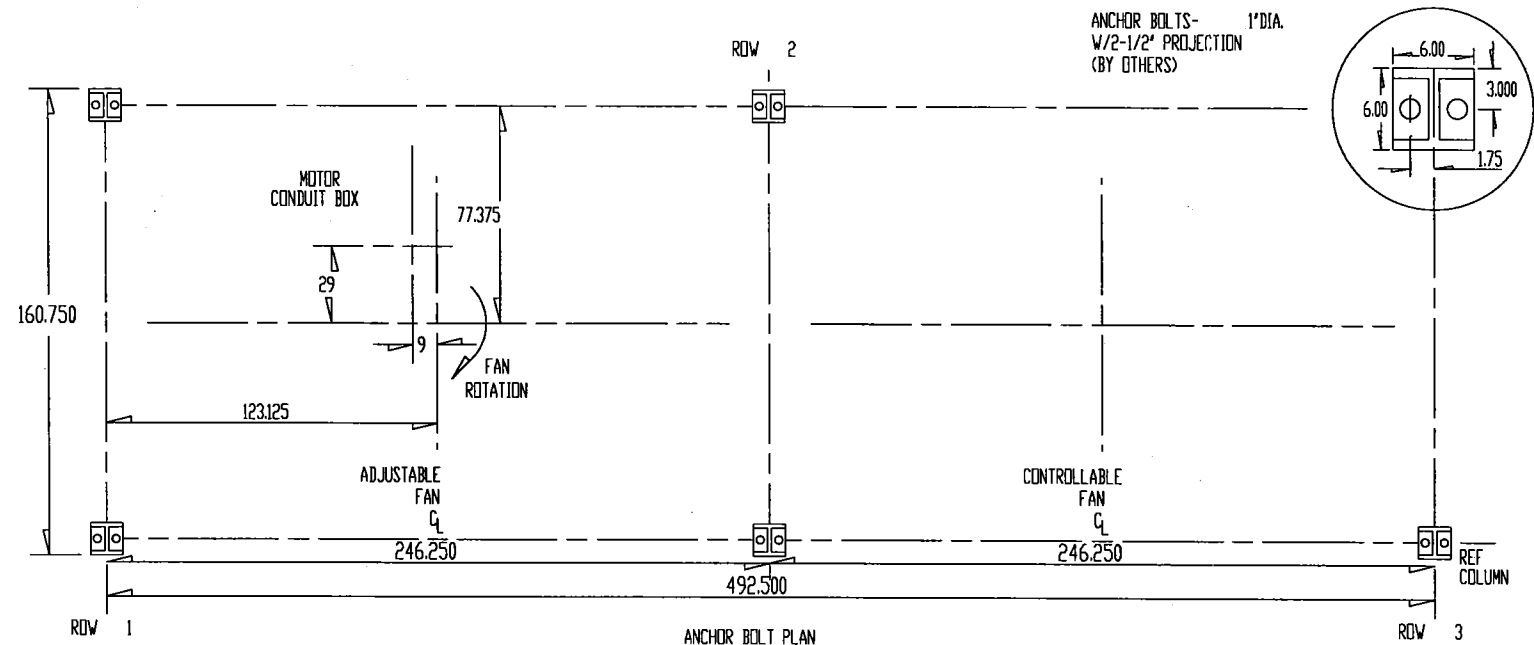


DRY WGT	34827	WIND	30.0	PSF /100	MPH	SEISMIC	1	PLATFORM	0	LBS/SQ-FT LIVE	
COLUMN LOAD (KIPS)	DRY DEAD	WET DEAD	WIND VERT	WIND HORIZ	SEIS VERT	SEIS HORIZ	SNOW	PLAT	NOZZ VERT	NOZZ HORIZ	TOTAL
ROW 1 /COLUMN	4.4	4.8	2.3	1.1	0.7	0.3	0.0	0.0	0.0	0.0	7.1
ROW 2 /COLUMN	8.7	9.6	4.6	2.2	1.0	0.7	0.0	0.0	0.0	0.0	14.1
ROW 3 /COLUMN	4.4	4.8	2.3	1.1	0.7	0.3	0.0	0.0	0.0	0.0	7.1

FAN 40 5000
 144 IN. DIAMETER 7 BLADE
 196000 ACFM 12.7 DEG.
 DRIVE REDUCER
 BELTS (8) 3VX-1250
 SHEAVES FAN 33.5 MOTOR 5.3
 BEARINGS 2.9375 IN.

MOTOR HP 30.0 RPM 1750 /O.
 286T TEFC
 INSULATION CLASS F /B TEMP RISE
 460 /3/60 SINGLE WINDING VARIABLE TORQUE
 AMPS(±10%)FLA 36. LRA 218.
 VIBRATION SWITCH MURPHY VS-2EX
 VOLTS 480. AMPS 5.0 CONTACTS DPDT

SHOP RUN IN TEST



1 OF 3 BAYS PROVIDED
 3 BAYS PER UNIT
 1 UNIT PROVIDED
 6 INCHES BETWEEN BAYS

ITEM	SERVICE	NOZZLES INLET	OUTLET	REFERENCE DIMENSIONS				BUNDLE WEIGHT	COUPLINGS			SHUTTER-OPERATOR	HAIL SCR. CODE	DESIGN PRESS.	
				A	B	C	D		V&D	TEMP	PRESS				
1 AC-267	REFRIGERANT COND	(2) 4.00 - 300 # RF SCH XS	(2) 4.00 - 300 # RF SCH XS	200.750	178.125	7.375		19300	1-6000	3/4-6000	3/4-6000	MANUAL	NO	NATL	300

TOLERANCES: (ALL DIMENSIONS IN INCHES)
 MECHANICAL EQUIPMENT ±1/8" PER 10'-0"
 NOZZLE ±1/8"
 STRUCTURAL - HAND TOOL CLEAN
 WITH 1 COAT GALVANIZE
 FRAME - HAND TOOL CLEAN
 WITH 1 COAT GALVANIZE
 HEADER - WHITE METAL BLAST CLEAN
 WITH 2 COAT EPOXY PRIME & FINISH

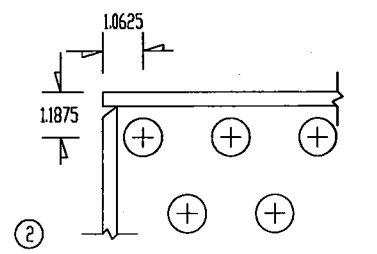
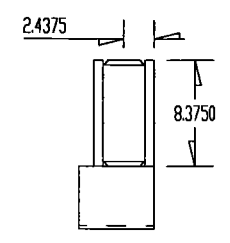
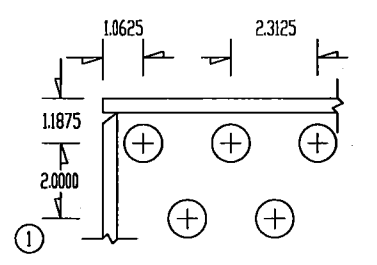
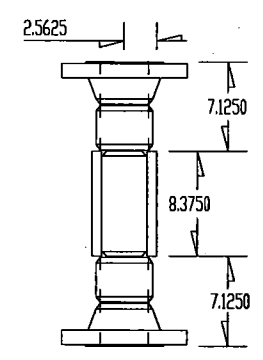
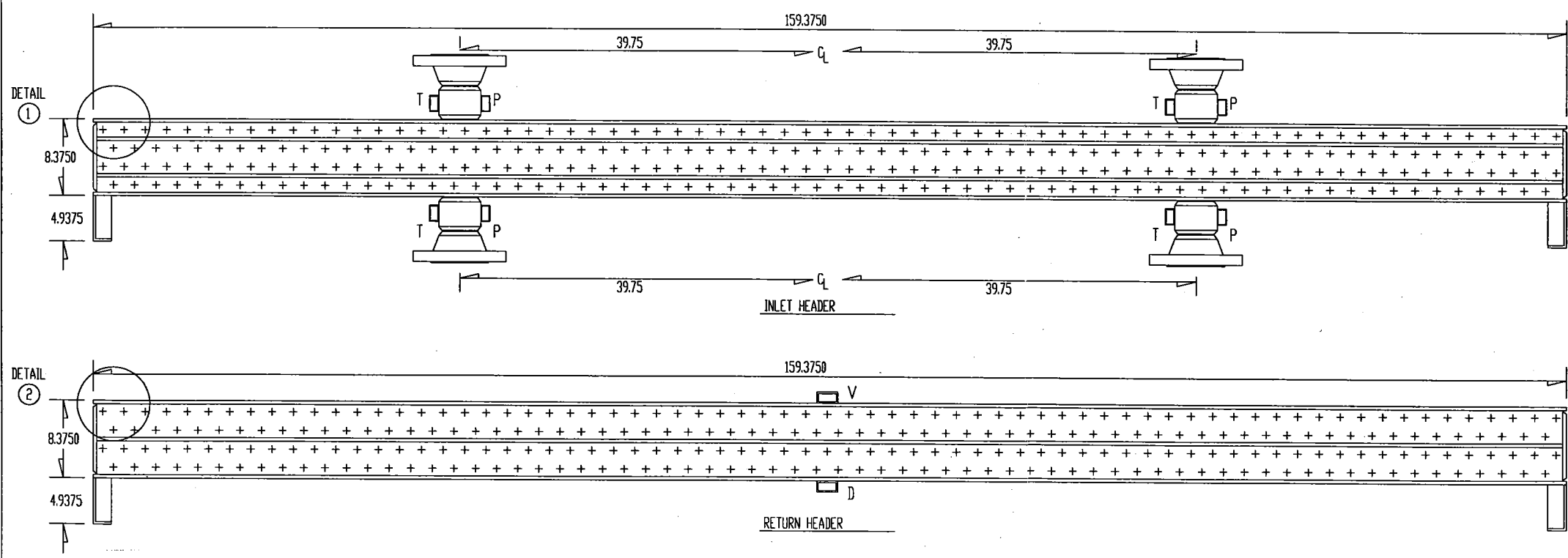
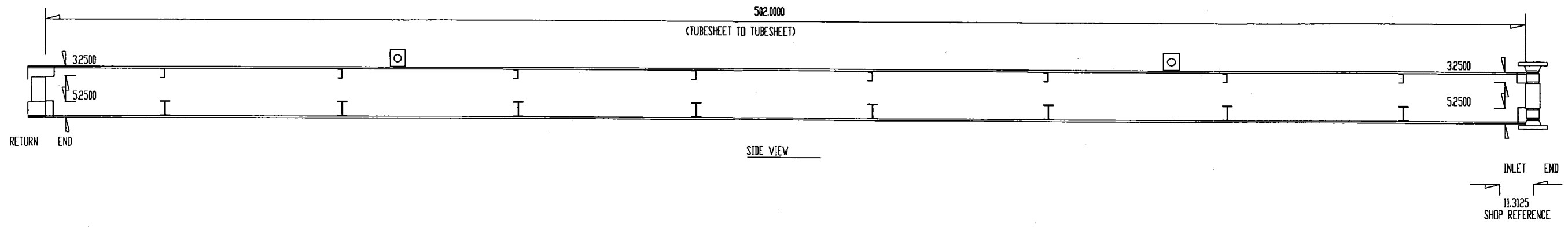
CUSTOMER SCHEDULE A, INC.
 LOCATION VERNON PARISH, LA
 REFERENCE 96325-504100-02

CERTIFIED BY *[Signature]* DATE 3/17/97

SMITHCO
 AIR COOLED DIVISION
 TULSA, OKLAHOMA

PIPING, EQUIPMENT OUTLINE & ANCHOR BOLT PLAN
 MODEL 3 F 42-134-2 QUANTITY 1

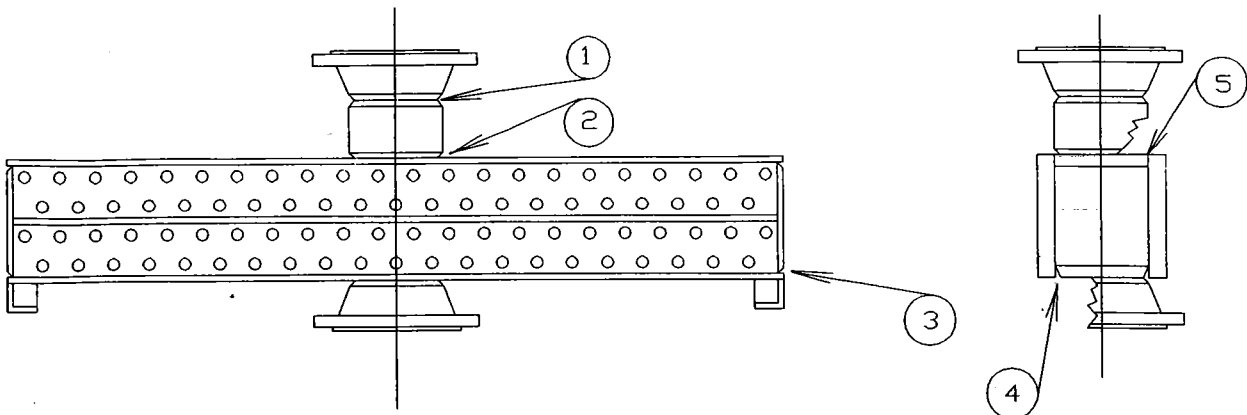
DWN K.T. CKD RWT DATE 3-14-1997
 JOB 97B 054 -A



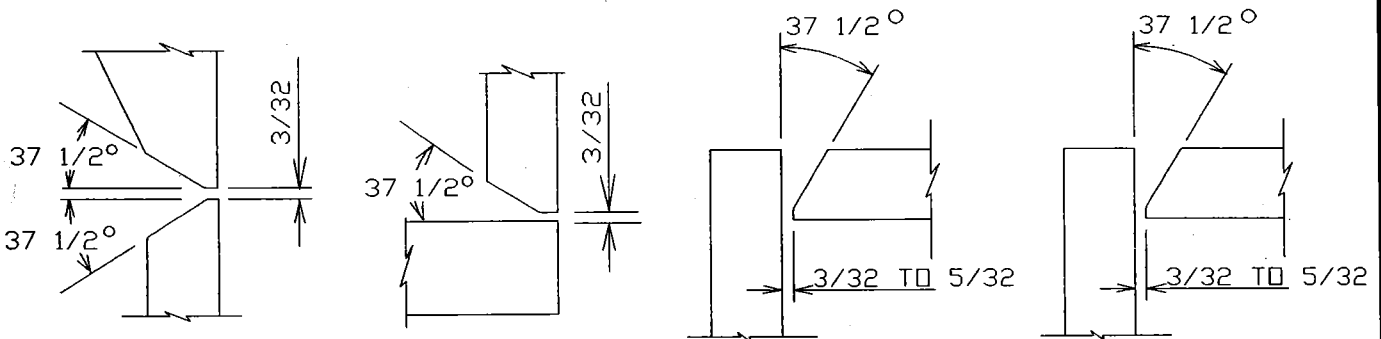
Certified
By R. J. [Signature]
3/17/97

TUBE SHEET SIDE

MACHINING TUBE HOLE 0.9375 1.010 ± 0.002 SG PLUG HOLE 1.0312 SF 1.375 TAP 0.7500 NOZZLE IN (2) 4.00 # 300 # RF SCH XS OUT (2) 4.00 # 300 # RF SCH XS TEMP 3/4-6000 PRESS 3/4-6000 VENT 1-6000 DRAIN 1-6000 WEIGHT 1700		REAM SPECIAL INLET TUBE PLUG 0.7500 159.3750 8.3750 NONE INLET COVER 0.3750 159.3750 3.3750 LONG SIDES INLET END 0.3750 3.3750 7.3750 ALL SIDES INLET STAY 0.3750 158.4375 3.4375 ALL SIDES RETURN TUBE PLUG 0.7500 159.3750 8.3750 NONE RETURN COVER 0.3750 159.3750 3.0625 LONG SIDES RETURN END 0.3750 3.0625 7.3750 ALL SIDES RETURN STAY 0.3750 158.4375 3.1250 ALL SIDES		THICK LENGTH WIDTH BEVELS MATERIAL SPECIFICATIONS PLATE SA-516 GR-70 NDRM FLG SA-105 PIPE SA-106B STOCK CPLG SA-105 STOCK WELD PROCEDURES PIPE-FLANGE LIC-SM-2 FLANGE-HEAD SM-1 /SM-1 HAND WELD SM-2 /SM-2 AUTO WELD SM-3 /SM-3 PLATE TOLERANCES ± 1/16"		TUBES 274 TF 69 ROWS 4 PASS 4 LGTH 504 IN TUBE OD 1.000 X 0.060 MATL SA-214 WLD FIN TYPE L-TENSION 100 - 0.625 - alum PLUG QTY 548 TYPE A105 -1818 GASKET CS -1813 EXPANDER 0.8800 LENGTH 6.0000 FRAME -THICK 0.3125 LENGTH 514 IN. DEPTH 17.2500 X 3 SUPPORT- 8 BINDER- 8 CLOSER- 4 159.000 SUPPORT TYPE - WIGGLE STRIP F. FOOT: 6" X 4.9375 B. FOOT: 6" X 4.9375		STOCKO TEST PRESSURE: 450 TIME: 60 MIN. W/ CHART HEADS: WHITE METAL BLAST CLEAN FRAME: w/ 2 EPOXY PRIME & FINISH HAND TOOL CLEAN w/ 1 galvanize COIL VOLUME: 56 CUBIC FT		AIR COOLED DIVISION BUNDLE DETAILS APPRV/KDT REV 3 -14 -97 SERVICE : Refrigerant Cond ITEM : AC-267			
MFG 1 QTY 3		WELD 2		FIN 2		ASMBL 1		STRUC 1		INSP 1		CUST 0	
TOLERANCES LENGTH & WIDTH ± 0.125" PER 10' -0" TUBE PROJECTION 0.25 ± 0.125		WEIGHT 19200		97 B 0 54 1									



TYPICAL HEADER



PIPE-FLANGE

UC-sm-2

1

FLANGE-HEAD

sm-1

2

HAND WELD

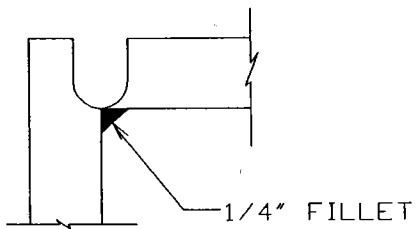
sm-2

3

AUTO-WELD

sm-3

4



AUTO-WELD

sm-3

5

Certified

By [Signature]
3/18/97

	SMITHCO ENGINEERING INC TULSA, OKLAHOMA	
	WELD MAP AND WELD DETAILS	
DWN Jon	CKD ----	DATE 3/17/97
JOB NO. 976054	DWG. NO. WM-1	