

FRONT HEADER
(PLUG SHEET REMOVED)
SERIAL #: R-3989-1-FT-1
125 3/4"

PARTITION PLATE(S)
with 1/4" HOLE
on (TYP.)

BILL OF MATERIAL FOR: 1 IDENTICAL SECTIONS REQ'D. FOR THIS ITEM

| MK. NO. | QTY. EACH | TOTAL QTY. | DESCRIPTION | MAT'L QTY. | WT. |
|-------------------|-----------|------------|--|----------------------|------|
| 1 | 4 | 4 | 1 1/8" x 11 1/2" x 125 3/4" | SR-424 UNS N08925 | 1913 |
| 2 | 4 | 4 | 1" x 3 3/4" x 125 3/4" | SR-424 UNS N08925 | 555 |
| 3 | 4 | 4 | 3/4" x 3 3/4" x 9 1/4" | SR-424 UNS N08925 | 31 |
| 4 | 3 | 3 | 1/2" x 3 3/4" x 124" | SR-424 UNS N08925 | 205 |
| 5 | 3 | 3 | 1/2" x 3 3/4" x 124" | SR-424 UNS N08925 | 205 |
| 6 | 1 | 1 | 1/4" x 3" x 7" | SR-424 UNS N08925 | 2 |
| 7 | 1 | 1 | 1/4" x 6" x 7" | SR-424 UNS N08925 | 3 |
| 8 | 4 | 4 | 4"-1500# RTJWN SCH 120 | SR-554 UNS N08925 | 276 |
| 9 | 4 | 4 | 1"-1500# RTJLN W/ BLIND FLG., STUDS, NUTS, & GASKETS | SR-554 UNS N08925 | 96 |
| 10 | 1 | 1 | NAMEPLATE RE: DWG. 3989010NP | 304 S.S. | N/A |
| 11 | 416 | 416 | P-11-9 RE: DWG. MSTR000PLG | SR-554 UNS N08925 | N/A |
| 12 | 416 | 416 | G-11 RE: DWG. MSTR000PGA | SR-424 UNS N08925 | N/A |
| TOTAL WT. = 3296# | | | | | |

NOTES FOR PURCHASING:

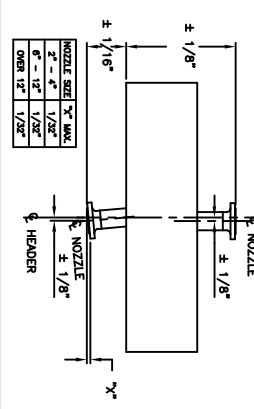
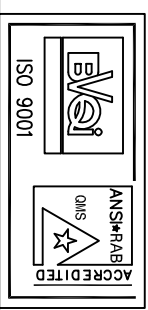
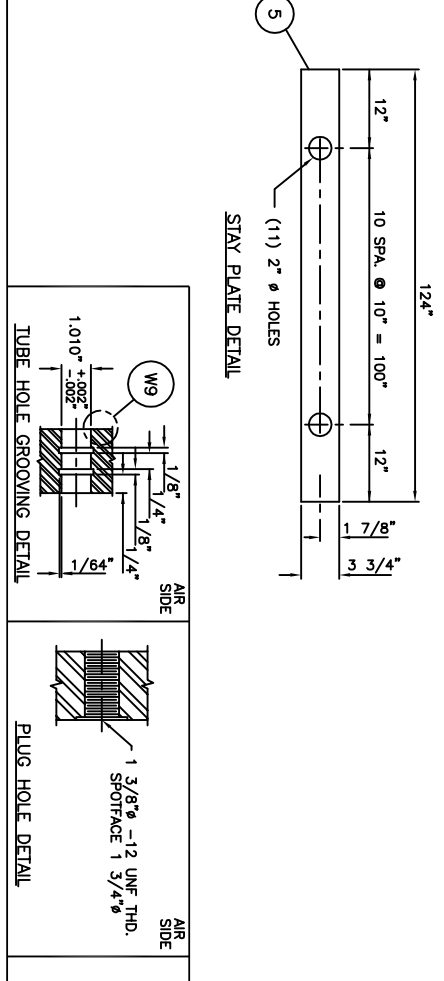
- 1) PLUG GASKET CONTACT SURFACE TO BE 125 RMS TO 250 RMS. FLANGE FACING SHALL BE 63 RMS.
- 2) WHEN BLIND FLANGES ARE PROVIDED, STUD BOLTS ARE TO BE A453 GR. 660 (COATED) W/ (2)A453 GR.660 HEAVY HEX NUTS (MAX. HRC 22), TAPPED AND COATED (FLOURO-KOTE #1 GREEN), FLANGE GASKETS SHALL BE TYPE R RING JOINT, TYCO 12, ANNEALED TITANIUM, OCTAGONAL.
- 3) ALL PLATE SHALL BE CHECKED FOR LAMINATIONS BY ULTRASONIC SCANNING ON PARALLEL PATHS TRANSVERSE TO THE MAJOR PLATE AXIS ON TWO INCH CENTERS AND ONE INCH FROM ALL PLATE EDGES.

| PART | IMPACT TESTING REQUIREMENTS | | EXEMPTION CRITERIA OR CV VALUE FOR TEST |
|-------------|-----------------------------|--------|---|
| | REQ'D. | YES/NO | |
| PLATE | | | UNF-65 |
| NOZZLE PIPE | | X | UNF-65 |
| FLANGE | | X | UNF-65 |

GENERAL NOTES:

- 1) 1 SECTION(S) REQUIRED
- 2) DESIGNED IN ACCORDANCE WITH ASME SECT. VIII, DIV. 1, ED. 98, ADD. 00 AND API-661, ED. 97
- 3) ASME CODE STAMP REQUIRED.
- 4) FLANGES, BOLT HOLES TO STRADDLE NATURAL CENTERLINE
- 5) MANUFACTURING TOLERANCES PER API-661, ED. 97
- 6) FOR DESIGN CALCULATIONS REF. DOC. : 3989010CS1, CS2, & CS3
- 7) FOR WELDING DETAILS AND PWHT & NDT REQUIREMENTS REF. DOC. : 3989000WIM
- 8) FOR FINISH REF. DOC. : 3989000AITS

REAR HEADER
(PLUG SHEET REMOVED)
SERIAL #: R-3989-1-RT-1
124"



| NO. | DESCRIPTION | DATE | BY | APPROVED |
|-----|--|----------|----|----------|
| 2 | CHANGE WS FROM WB | 6/17/02 | PH | DWM |
| 1 | FLANGE BORE, NOTES HDR LENGTH & HEIGHT | 2/28/02 | PH | DWM |
| 0 | ORIGINAL ISSUE | 01/02/02 | PH | DWM |

GEA Rainey Corporation
Tulsa Port of Catoosa
Catoosa, Oklahoma

CUSTOMER: EXXONMOBIL GLOBAL SERVICES COMPANY

THEODORE, AL

SCALE: NONE

DWG. NO.: 3989010HDR

REV.: 2