

ISO VIEW

REV	DESCRIPTION	DATE	APPROVED
1	FINAL CERTIFIED	6/29/2016	JLR
0	APPROVAL DRAWING	6/15/2016	JLR

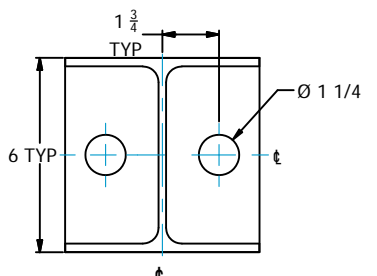
REVISION HISTORY

MODELED BY: JLR  DETAILED BY: JLR  CHECKED BY: DHC  APPROVED BY: BJY	UNLESS OTHERWISE SPECIFIED		<b>CHART COOLER SERVICE CO, INC.</b> 3515 DAWSON RD. TULSA, OK 74115 (918)621-5200	
	1. REMOVE ALL BURRS AND SHARP CORNERS. 2. COR. RAD .03 3. DO NOT SCALE DRAWING. 4. ALL DIMENSIONS ARE IN INCHES. 5. ALT DIMENSIONS ARE IN MM 6. MACHINE FIN.	7. FABRICATION .X = ± 0.25 .XX = ± 0.125 .XXX = ± 0.06 FRACTION = ± 1/8 ANGLES ± 3° 8. MACHINE .X = ±0.030 .XX = ±0.015 .XXX = ±0.005 ANGLES ±1/2° FRACTION = ± 1/64	TITLE: <b>COVER PAGE</b>  CLIENT: <b>Gregory Gas Processing Equipment LLC</b>  SERVICE: NATURAL GAS   TAG NO.: AC-2502 PO#: 16-0506-2   PROJECT: AC-2502 DATE: 06/15/2016   JOB No.:15316   MODEL: 1-HF84-1-10 REV. 1   DRAW NO.: 15316-O-1   UNITS: 1	

FINAL CERTIFIED  
RELEASED FOR FABRICATION

4  
3  
2  
1

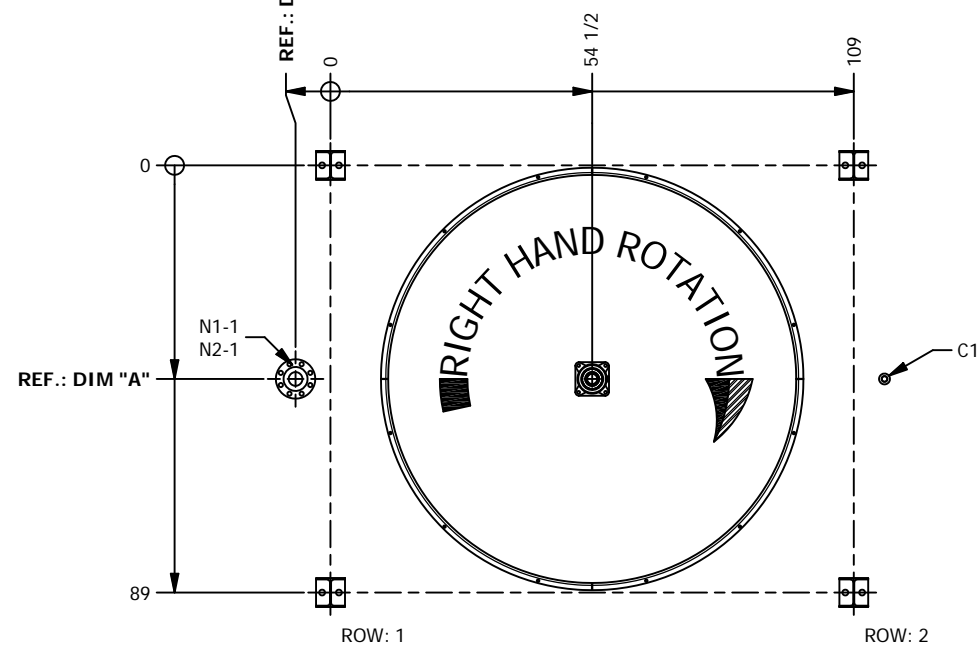
D  
C  
B  
A



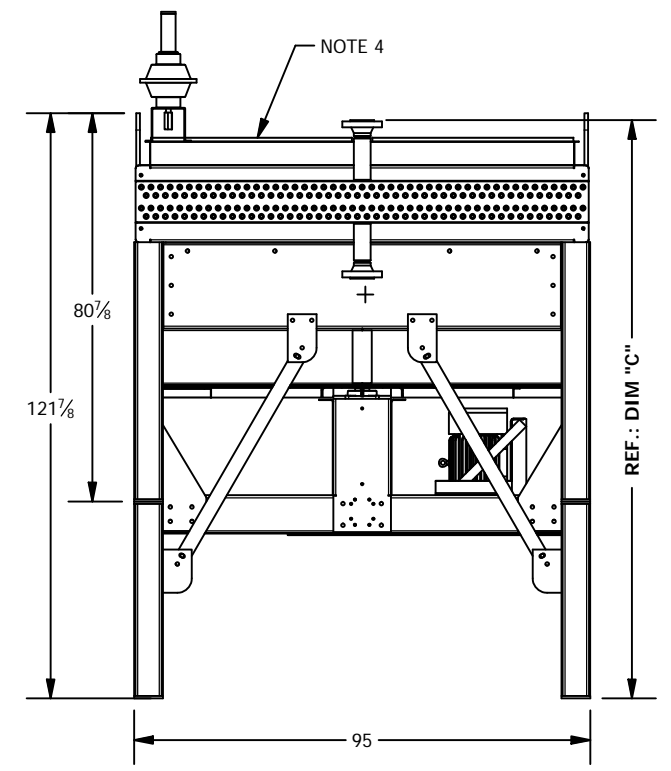
ANCHOR PLATE DETAIL  
1/2" THK BASE PLATE  
W6X15

- GENERAL NOTES:
1. COOLER IS OF BOLTED CONSTRUCTION.
  2. FINISH: GALVANIZED.
  3. VIBRATION SWITCH: MURPHY VS2-EX SWITCH
  4. SERIES 500 LOUVER W/ DURASTROKE 1000 ACTUATOR
- COIL ORDER (LEFT TO RIGHT) W/ COIL VOLUMES.  
NATURAL GAS (COIL 1) = 61 GAL

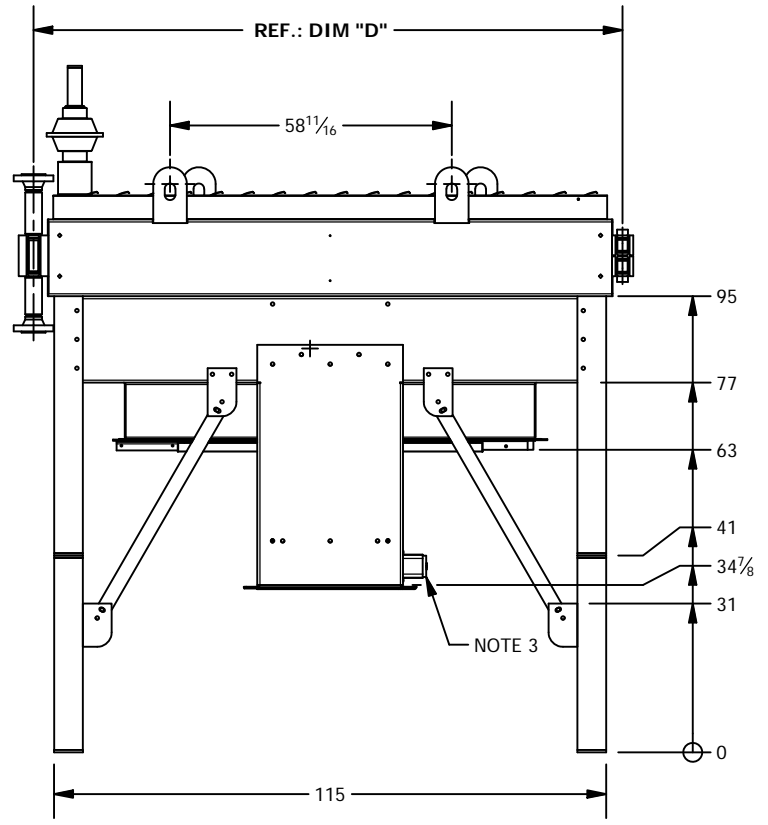
COIL #	SERVICE	CODE	PRESSURES (psig) [ barg ]			TEMPERATURES (°F) [ °C ]					TOP OF COIL
			DESIGN	OPERATING	TEST	DESIGN	INLET	OUTLET	AIR DESIGN INLET	AIR DESIGN OUTLET	
1	NATURAL GAS	ASME CODE SEC. VIII DIV. 1, 2015 ED., APP 13	950	764	1235	450	450	110	100	134	LOUVER



PLAN VIEW



END VIEW



ELEVATION VIEW

DRIVE	
FAN SHEAVE	QD3/3V19.00
MOTOR SHEAVE	QD3/3V6.00
BELTS	3VX900
CENTER DIST	24.5
MOTOR	
HP	15
RPM	1750
FRAME	254T
ENCLOSURE	TEFC
VOLTS	460
FREQUENCY	60
PHASES	3
FAN	
MAKE	Moore Fans
DIA. (ft)	7
MODEL	10000-24 SC
BLADE QTY	4
PITCH	13.87
ACFM/FAN	69301
RPM	549
HP	11.91
BEARING	
FAN	2.1875 SCM 4 BOLT FLANGE
IDLER	-

FINAL CERTIFIED  
RELEASED FOR FABRICATION

SCHEDULE OF OPENINGS/REFERENCE DIMENSION TABLE						
TAG	SERVICE	DIM A	DIM B	DIM C	DIM D	DESCRIPTION
N1-1	COIL 1 INLET 1	44-1/2 in	7-5/16 in	120-7/16 in	122-11/16 in	3"-600# RF-WN 0.3 WT (Sch. 80) (Wgt. X-Stg.) SA-105
N2-1	COIL 1 OUTLET 1	44-1/2 in	7-5/16 in	87-7/16 in	122-11/16 in	3"-600# RF-WN 0.3 WT (Sch. 80) (Wgt. X-Stg.) SA-105
C1	VENT/ DRAIN	--	--	--	--	1"-6000# HALF CPLG. (THD) W/ HEX PLUG SA-105

1	FINAL CERTIFIED	6/29/2016	JLR
0	APPROVAL DRAWING	6/15/2016	JLR
REV	DESCRIPTION	DATE	APPROVED
REVISION HISTORY			

MODELED BY:	UNLESS OTHERWISE SPECIFIED	
JLR	1. REMOVE ALL BURRS AND SHARP CORNERS.	7. FABRICATION .X = ± 0.25
DETAILED BY:	2. COR. RAD .03	.XX = ± 0.125
JLR	3. DO NOT SCALE DRAWING.	.XXX = ± 0.06
CHECKED BY:	4. ALL DIMENSIONS ARE IN INCHES.	FRACTION = ± 1/8
DHC	5. ALT DIMENSIONS ARE IN MM	ANGLES ± 3°
APPROVED BY:	6. MACHINE FIN.	8. MACHINE .X = ± 0.030
BJY		.XX = ± 0.015
		.XXX = ± 0.005
		ANGLES ± 1/2°
		FRACTION = ± 1/64

CHART COOLER SERVICE CO, INC.		
3515 DAWSON RD. TULSA, OK 74115 (918)621-5200		
TITLE: JOB: 15316 H-MODEL BAY ARRANGEMENT		
CLIENT: Gregory Gas Processing Equipment LLC		
SERVICE: NATURAL GAS   TAG NO.: AC-2502		
PO#: 16-0506-2	PROJECT: AC-2502	
DATE: 06/15/2016	JOB No.: 15316	MODEL: 1-HF84-1-10
REV. 1   DRAW NO.: 15316-O-2   UNITS: 1		