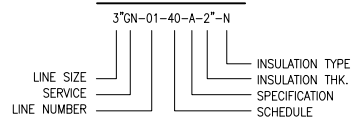


LINE EXAMPLE



LACT PUMP

FLOWSERVE DURCO
MODEL: 1K1.5x1-82RV M3 ST
IMPELLAR: 6.69
INLET: 1 1/2"
DISCHARGE: 1"

LACT PUMP MOTOR

TOSHIBA
CAT NO: Y752SDR41A-P
7.5HP 3PH 208-230/460V 60Hz
3500 RPM
TEFC

STRAINER

UMC STRAIGHT-THRU STRAINER
2"-150# RF
&
SS STRAINER BASKET W/
3/16" PERFORATIONS

AIR ELIMINATOR

ARMSTRONG 11AV
AUTOMATIC AIR VENT VALVE
18 BAR WORKING PRESSURE

BS&W PROBE

INVALCO BS&W PROBE
MODEL 7300
2"-150# RF

SAMPLE EXTRACTOR

PARKER SOLENOID VALVE
LINCO 10cc SAMPLE REGULATOR

SAMPLE RECEIVER

UMC 15 GAL SAMPLE POT
1 1/2" OD X 26" S/S
MAMP 30 PSIG @ 100F
INTERIOR PHENOLIC COATED 6mil

SAMPLE CIRCULATION PUMP

MEYERS LIQUID TRANSFER PUMP

SAMPLE CIRCULATION PUMP MOTOR

WORLDWIDE A/C MOTOR
MODEL: ATJ34-36-56CB
3/4 HP 3PH 230/460V 60Hz
3450 RPM
TEFC

POSITIVE DISPLACEMENT ROTARY VANE METER

FMC SMITH METER
MODEL: C2-S3
2"-150# RF
W/ RIGHT ANGLE DRIVE,
VEEDER-ROOT REGISTER WITH PULSER KIT

TEMPERATURE AVERAGER

LINCO-ELECTROMATIC
MODEL: TB-1000
WITH
POWER SUPPLY,
TA-1000 PROBE,
& THERMOWELL

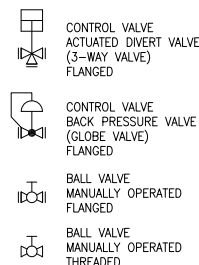
LINE SPECIFICATIONS

- A --- 150# C.S. 2"
- A1 --- 150# S/S 1 1/2"
- B --- 150# C.S. 1 1/2"
- B1 --- 150# S/S 1 1/2"
- C --- 600# C.S. 2"
- C1 --- 600# S/S 2"
- D --- 900# C.S. 2"
- D1 --- 900# S/S 2"
- E --- TUBING C.S. 2"
- E1 --- TUBING S/S 2"

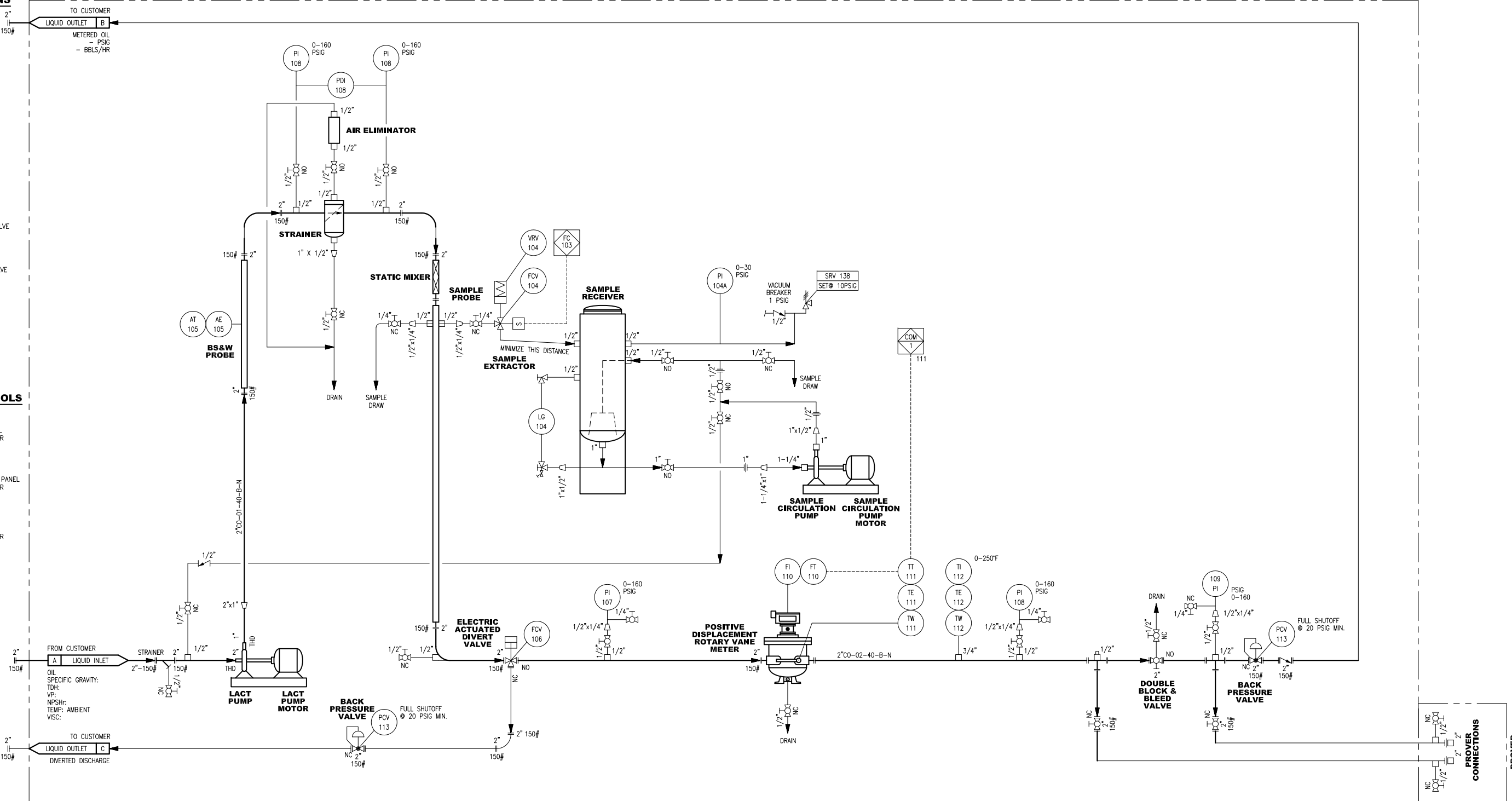
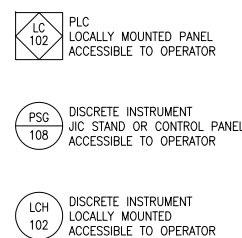
LINE SERVICE

- O --- OIL
- GN --- NATURAL GAS
- CO --- CONDENSATE
- C --- COOLANT
- CS --- COOLANT SUPPLY
- CR --- COOLANT RETURN
- OL --- LUBE OIL

VALVE SYMBOLS



INSTRUMENT SYMBOLS



- NOTES:**
1. ALL WIRING TO BE RUN WITHIN 1/2" RIGID CONDUIT.
 2. ALL PIPING 1-1/2" OR SMALLER TO BE SCHEDULE 80 WITH THREADED FORGED STEEL FITTINGS.

NO.	GENERAL NOTES	REFERENCE NUMBER	REFERENCE DRAWING	REV.	DATE	REVISION	DRAWN	CHK'D	APPR.
1.	ALL DIMENSIONS IN INCHES			A					
2.	MATERIAL = ?			B					
3.	GENERAL TOLERANCES = ±			C					
4.				D					
5.				E					
6.				F					
7.				G					



3421 N. SYLVANIA AVE.
FORT WORTH, TX 76111
(817) 744-8242
FAX (817) 744-8243
www.-----com

CLIENT: **RESOURCES**
SCALE: N.T.S. DRAWN: DDF
CHECKED: - DATE: 7/25/13

TITLE: **2"-150# ANSI LEASE AUTOMATIC CUSTODY TRANSFER UNIT PIPING & INSTRUMENTATION DIAGRAM**
SHEET: - SHEET: -
UMC-50195-PID

PROVER CONNECTIONS CONNECTION ENCLOSURE