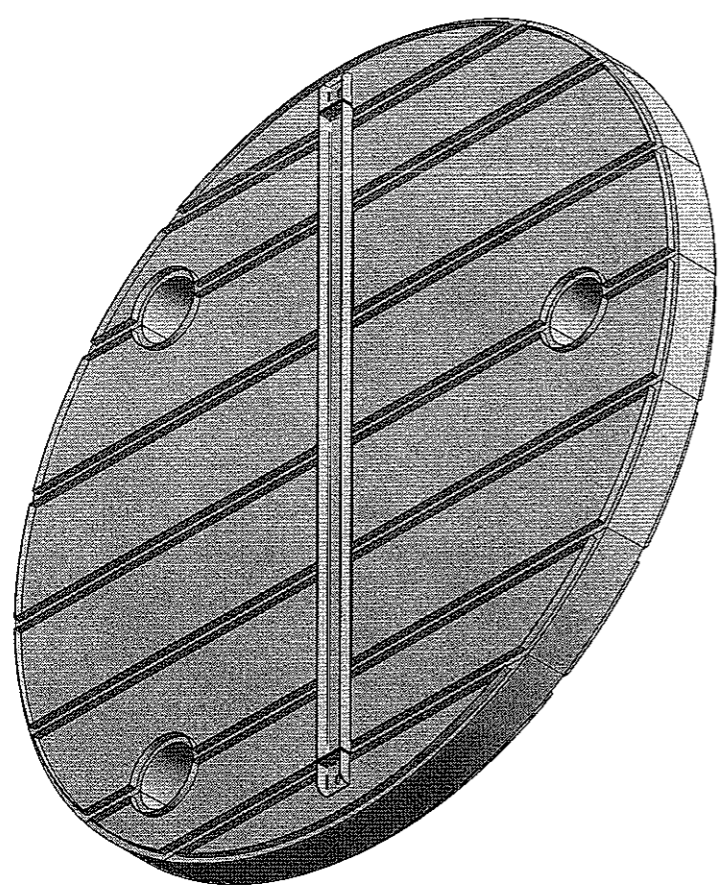


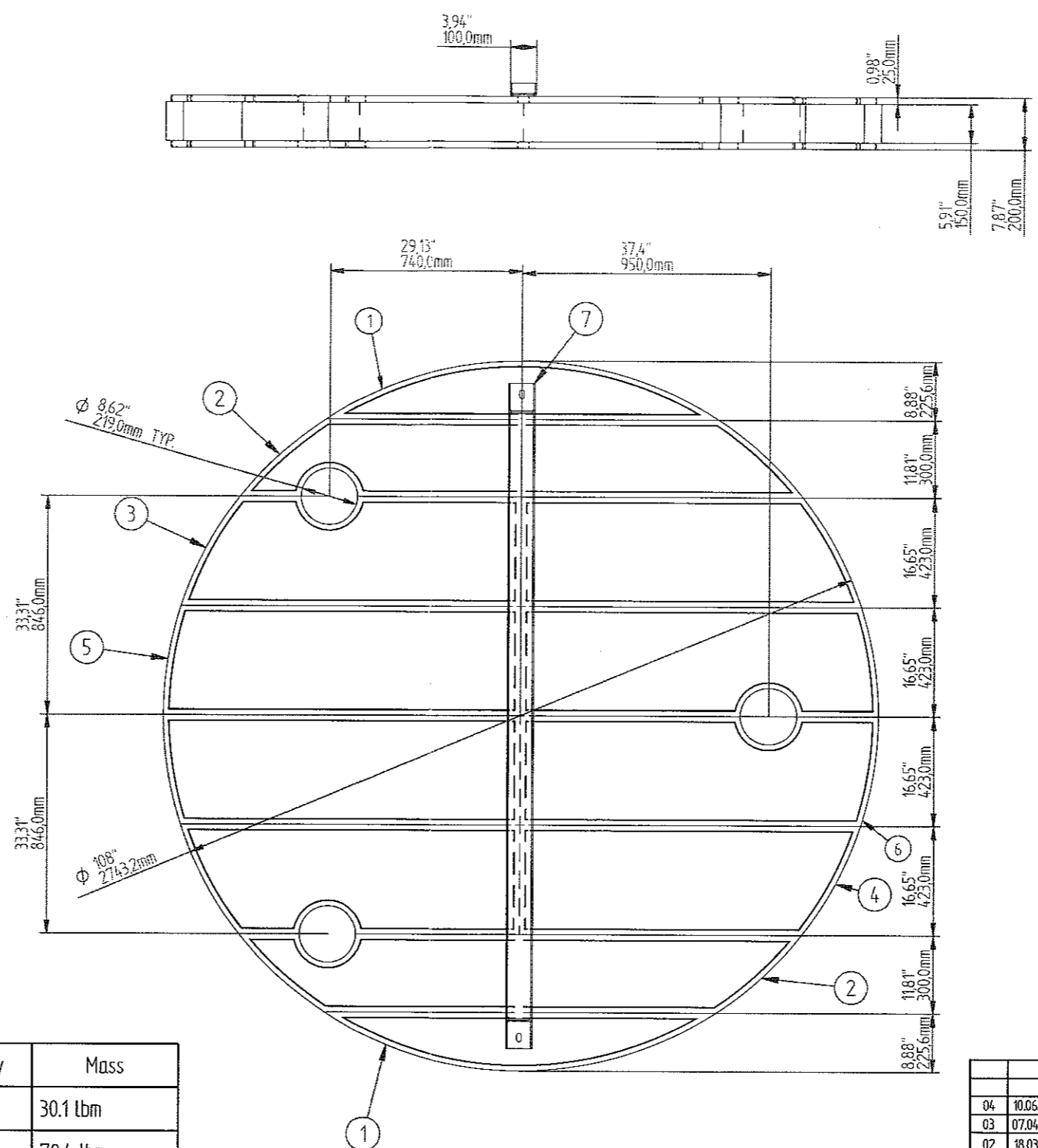
1 2 3 4 5 6 7 8 9 10 11 12

A
B
C
D
E
F

A
B
C
D
E
F



ISO VIEW



WorkleyParsons
REVIEWED BY: *Kim Toendawa*
DATE: 08/04/08

VC RELEASED FOR FABRICATION - CORRECT AND RESUBMIT
 VF FINAL - DO NOT RESUBMIT
 VI FINAL - INFORMATION ONLY
 VM NOT RELEASED FOR FABRICATION - CORRECT AND RESUBMIT
 VM FINAL MANUAL(S) - NOT RETURNED TO VENDOR
 VV FINAL - ELECTRONIC FILES
 VV VOID - SEE COMMENTS ON DOCUMENTS
 ED DO NOT ISSUE THIS REVISION SUPERCEDED BY ANOTHER REVISION

Purchaser's review and/or release for fabrication shall not be construed as relieving maker of any obligation or responsibility with respect to these documents of the items to be furnished by maker pursuant thereto.

- GENERAL NOTES:
1. ALL REMOVABLE INTERNALS TO PASS THROUGH MANWAY
 2. ALL MATERIAL TO BE STAINLESS STEEL 316 L, WITH 3.1 CERTIFICATES. (U.N.O.)
 3. ALL BOLTING MATERIAL TO BE 316 SS A4 C/W 2-OFF NUTS AND WASHERS. WITH 2.2 CERTIFICATE (U.N.O.)
 4. ALL PARTS TO BE PICKLED AND PASSIVATED.

Item	Title	Material	Quantity	Mass
1	mesh pad 1	AISI 316L	2	30.1 lbm
2	mesh pad 2	AISI 316L	2	70.4 lbm
3	mesh pad 3-2	AISI 316L	2	63.9 lbm
4	mesh pad 3-1	AISI 316L	2	66.3 lbm
5	mesh pad 4-1	AISI 316L	2	74.1 lbm
6	mesh pad 4-2	AISI 316L	2	71.6 lbm
7	Supporting beam	AISI 316L	1	42.3 lbm

Total mass: 418.7lbm

ConSept

TITLE: WP BP ALASKA
DETAIL DRAWING MESH PAD

SUPPLIER'S DOC. NO.: 108204-4208
CLIENT PROJECT REF.: 1ST STAGE SUNCTION SCRUBBER

REV. 04

DATE: 10.06.2008
REASON FOR ISSUE: ISSUED FOR ACCEPTANCE

DATE: 07.04.2008
REASON FOR ISSUE: ISSUED FOR ACCEPTANCE

DATE: 18.03.2008
REASON FOR ISSUE: ISSUED FOR ACCEPTANCE

DATE: 20.02.2008
REASON FOR ISSUE: ISSUED FOR ACCEPTANCE

Drawn: TJ, RR, DTK
Checked: TJ, RR, DTK
Approved: TJ, RR, DTK

W.D.	DISC	PROJ #	P.O.	SEQ	SHT	REV	TAG
VS-26001	VS-26001	244-02	0019	00007	001	003	VS-26001

A02

4:1

1 2 3 4 5 6 7 8 9 10 11 12