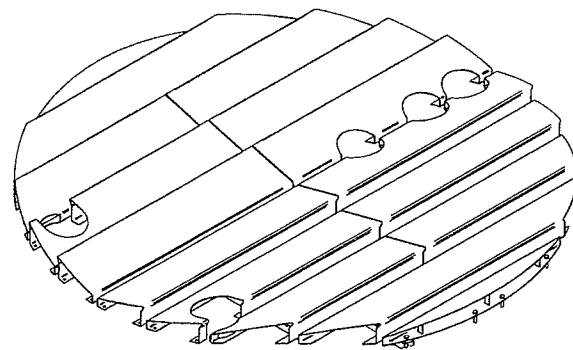
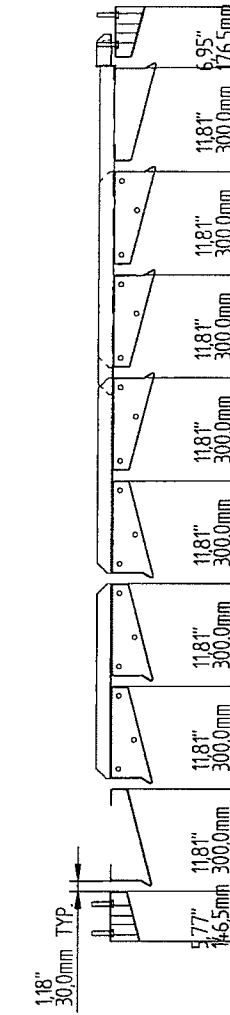
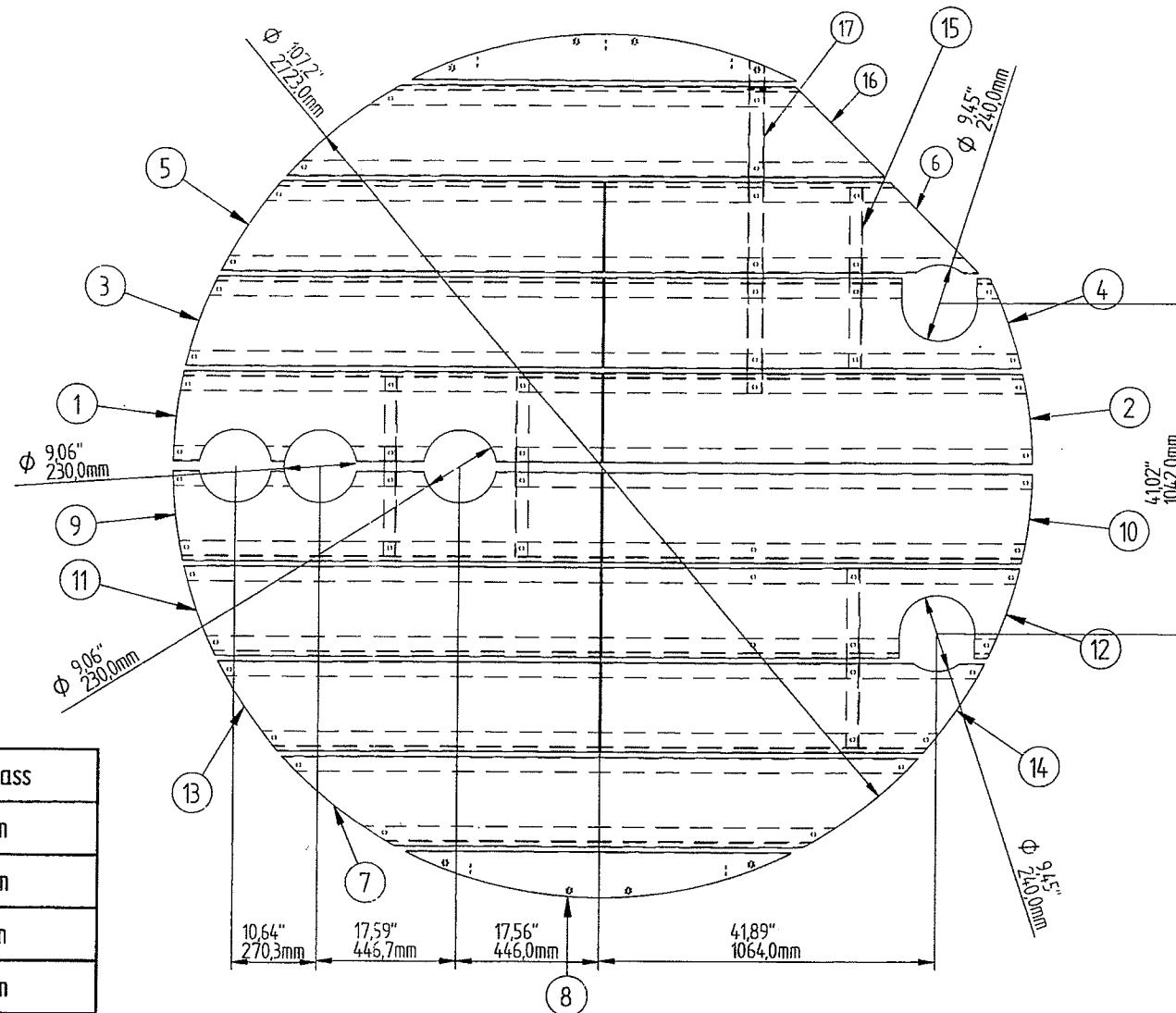


1 2 3 4 5 6 7 8 9 10 11 12

A
B
C
D
E
F
G
H



ISO VIEW



| | | | | | | |
|------|---------------|------|------|-----|-----|---------|
| DISC | PROJ # | P.O. | SEQ | SHT | REV | TAG |
| VND. | VS 3632414-02 | 0019 | 0008 | 001 | 004 | VS-2600 |

A02
4-1

| Item | Title | Material | Quantity | Mass |
|------|---------------------------|-----------|----------|----------|
| 1 | Sheet metal 1-1 | AISI 316L | 1 | 36.2 lbm |
| 2 | Sheet metal 1-2 | AISI 316L | 1 | 60.2 lbm |
| 3 | Sheet metal 2-1 | AISI 316L | 1 | 38.0 lbm |
| 4 | Sheet metal 2-2 | AISI 316L | 1 | 60.2 lbm |
| 5 | Sheet metal 3-1 | AISI 316L | 1 | 33.4 lbm |
| 6 | Sheet metal 3-2 CUT | AISI 316L | 1 | 30.6 lbm |
| 7 | Splash Plate 4- PL3mm | AISI 316L | 1 | 47.7 lbm |
| 8 | Sheet metal 5 | AISI 316L | 2 | 32.1 lbm |
| 9 | Sheet metal 1-1_mir | AISI 316L | 1 | 36.1 lbm |
| 10 | Sheet metal 1-2_mir | AISI 316L | 1 | 40.1 lbm |
| 11 | Sheet metal 2-1_mir | AISI 316L | 1 | 38.0 lbm |
| 12 | Sheet metal 2-2_mir | AISI 316L | 1 | 33.8 lbm |
| 13 | Sheet metal 3-1_mir | AISI 316L | 1 | 33.4 lbm |
| 14 | Sheet metal 3-2_mir | AISI 316L | 1 | 30.6 lbm |
| 15 | SP angular support- PL3mm | AISI 316L | 4 | 9.1 lbm |
| 16 | Splash Plate 4- PL3mm | AISI 316L | 1 | 45.1 lbm |
| 17 | SP U support | AISI 316L | 1 | 6.9 lbm |

Total mass : 563lbm

WorleyParsons
Reviewed by: *Jim Traylor*
DATE: 05/12/09

Purchaser's review and/or release for fabrication shall not be construed as relieving either of any obligation or responsibility with respect to these documents of the items to be furnished by either parent thereof.

VC RELEASED FOR FABRICATION - CORRECT AND RESUBMIT
 VF FINAL - DO NOT RESUBMIT
 VI FINAL - INFORMATION O.K.
 VN NOT RELEASED FOR FABRICATION - CORRECT AND RESUBMIT
 VM FINAL, MANUAL(S) - NOT RETURNED TO VENDOR
 VEF FINAL - ELECTRONIC FILES
 VV VOID - SEE COMMENTS ON DOCUMENTS
 ED DO NOT ISSUE THIS REVISION SUPERCEDED BY ANOTHER REVISION

- GENERAL NOTES:
1. ALL REMOVABLE INTERNALS TO PASS THROUGH MANWAY
 2. ALL MATERIAL TO BE STAINLESS STEEL 316 L, WITH 3.1 CERTIFICATES. (U.N.OJ)
 3. ALL BOLTING MATERIAL TO BE 316 SS A4 C/W 2-OFF NUTS AND WASHERS. WITH 2.2 CERTIFICATE (U.N.OJ)
 4. ALL PARTS TO BE PICKLED AND PASSIVATED.

| REV. | DATE | REASON FOR ISSUE | Drawn | Checked | Approved |
|------|------------|-----------------------|-------|---------|----------|
| 05 | 02.03.2009 | ISSUED FOR ACCEPTANCE | TJ | RR | DTK |
| 04 | 10.06.2008 | ISSUED FOR ACCEPTANCE | TJ | RR | DTK |
| 03 | 07.04.2008 | ISSUED FOR ACCEPTANCE | TJ | RR | DTK |
| 02 | 18.03.2008 | ISSUED FOR ACCEPTANCE | TJ | RR | DTK |
| 01 | 08.02.2008 | ISSUED FOR ACCEPTANCE | TJ | RR | DTK |

ConSept

TITLE: WP BP ALASKA
DETAIL DRAWING SPLASH PLATE

TAG: VS-2600
SIZE: A3
SCALE: -

SUPPLIERS DOC. NO: 108204-4209
CLIENT PROJECT REF: 1ST STAGE SUCTION SCRUBBER

REV: 05

1 2 3 4 5 6 7 8 9 10 11 12