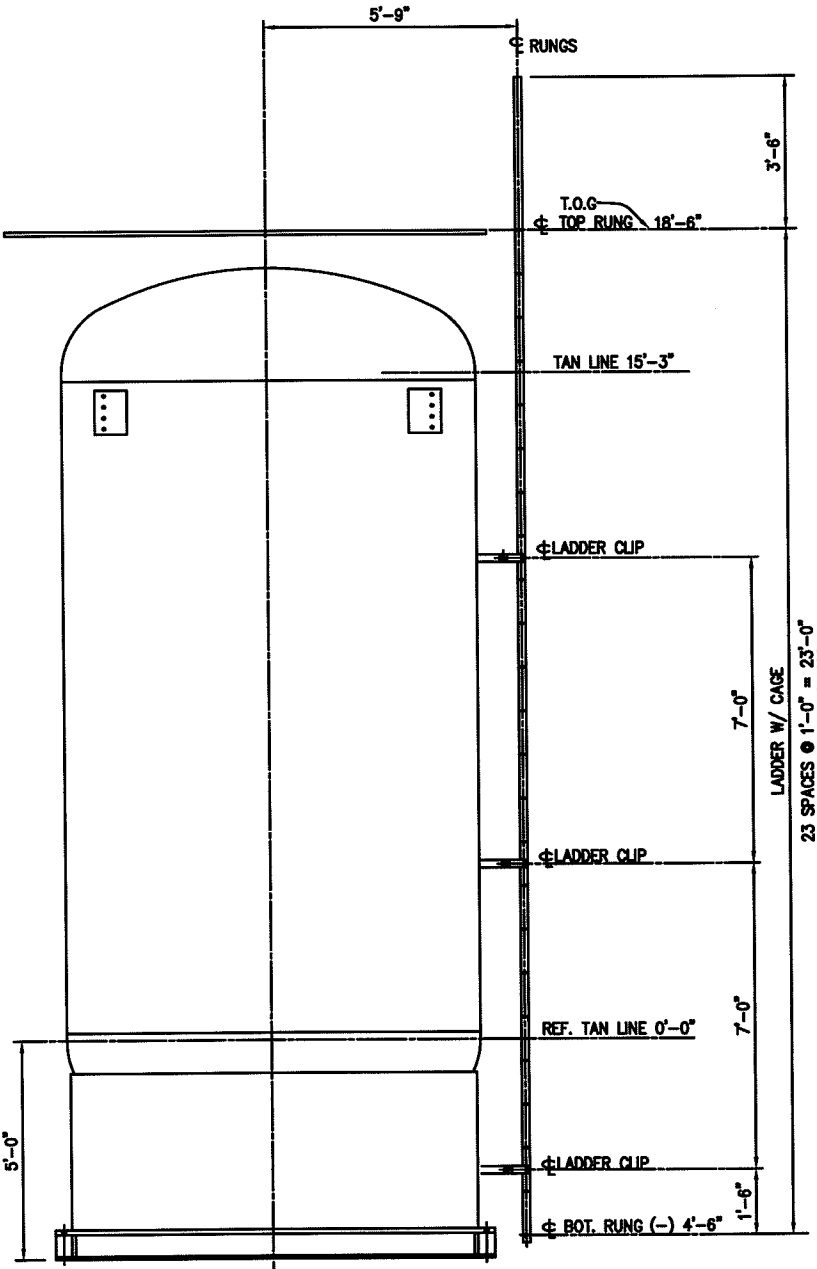


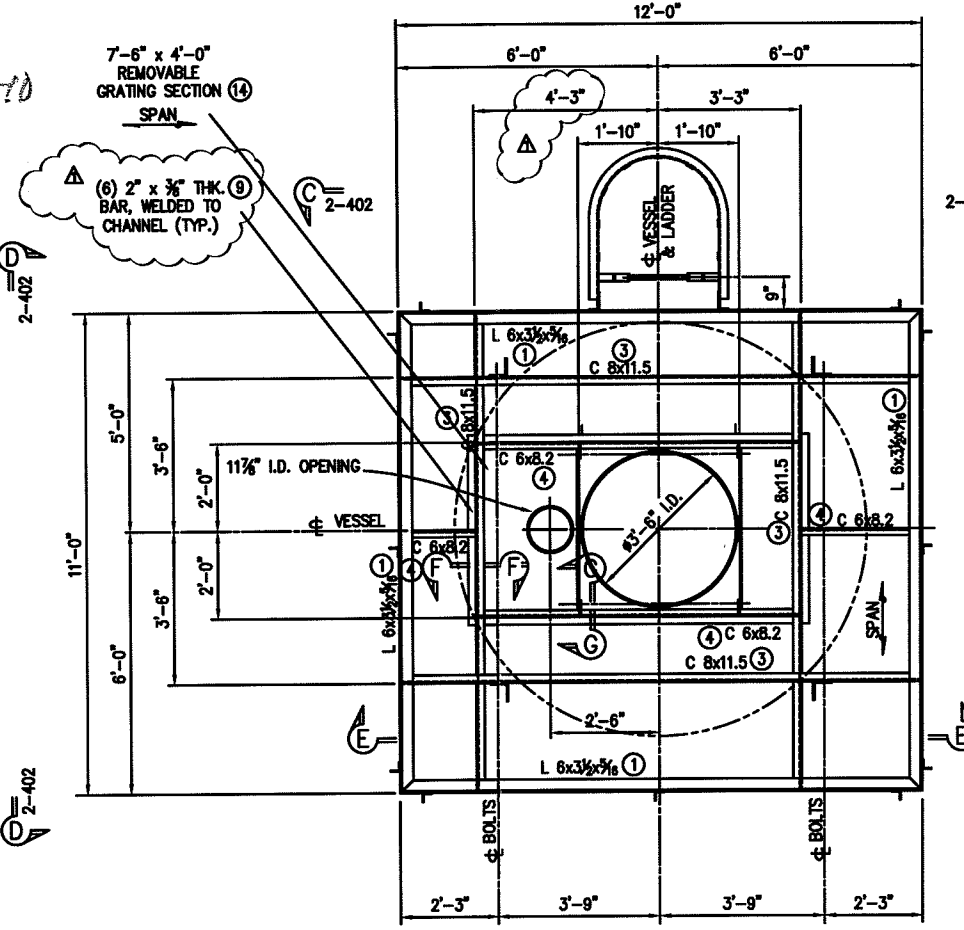
VND.	DISC	PROJ#	P.O.	SEQ	SHT	REV	TAG
	VS	26924244-02	0019	00010	001	004	VS-2600

ADD. ADD. ADD.
1101

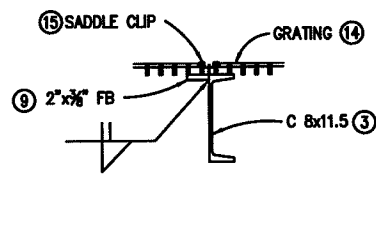
BILL OF MATERIALS			
ITEM NO.	QTY.	DESCRIPTION	MATERIAL
1	50 LF	L 6x3 1/2x5/16 (48' ACT)	450# A-36
2	20 LF	L 5x5x3/8 (18' ACT)	233# A-36
3	50 LF	C 8x11.5 (48' ACT)	529# A-36
4	20 LF	C 6x8.2 (20' ACT)	164# A-36
5	160 LF	L 2 1/2x2 1/2x1/4 (148' ACT)	598# A-36
6	10 LF	5"x3/8" FLAT BAR (9' ACT)	58# A-36
7	2 LF	6"x1/2" FLAT BAR (2' ACT)	20# A-36
8	4 LF	6"x3/8" FLAT BAR (4' ACT)	31# A-36
9	90 LF	2"x3/8" FLAT BAR (82' ACT)	209# A-36
10	220 LF	2"x1/4" FLAT BAR (218' ACT)	371# A-36
11	20 LF	3"x1/4" FLAT BAR (11' ACT)	28# A-36
12	40 LF	3/4" ROUND BAR (34' ACT.)	91# A-36
13	1	SAFETY GATE, FABENCO SERIES "A" SWING GATE	C.S. GALV.
14	130 SF	1 1/4"x1/8" SERRATED GRATING (126 SF ACT)	920# CS
15	80	SADDLE ANCHORS - CB (MCNICHOLS)	
16	80	MACHINE SCREWS 1/4"x1 3/4" LG HEX HEAD	
SELF TAPPING			
17	60 LF	1"x3/16" FLAT BAR	38# A-36
18	52	MACH BOLT, 5/8" x 2" LG HEX HD.	A-325 GALV.
W/HVY. H NUT W/(1)LOCK WASHER			



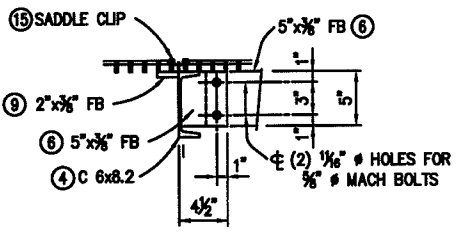
ELEVATION



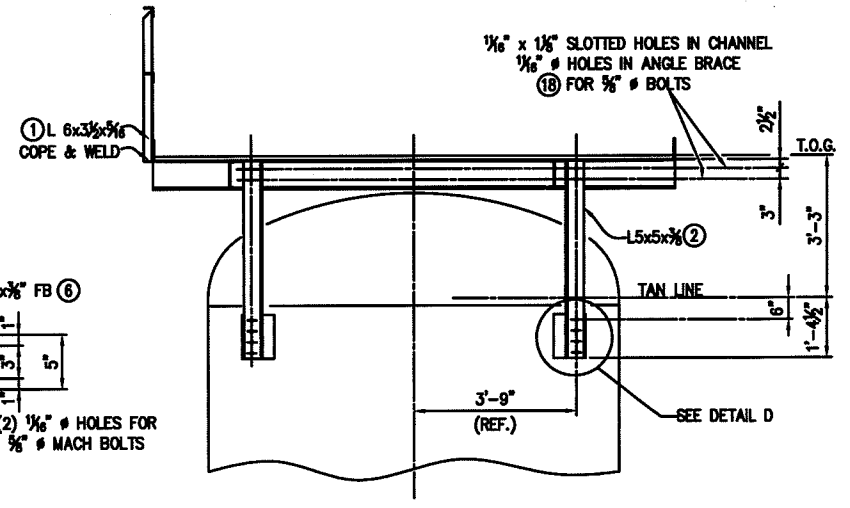
PLATFORM PLAN



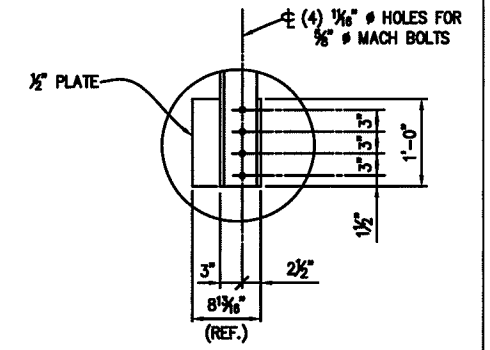
SECTION F-F



SECTION G-G



SECTION E-E



DETAIL D

PLATFORM & LADDER WEIGHT = 3740 LBS

THIS DRAWING AND ITS DESIGN ARE THE EXCLUSIVE PROPERTY OF PROSEP TECHNOLOGIES INC., AND SHALL NOT BE DISCLOSED OR REPRODUCED IN ANY MANNER WITHOUT THE PERMISSION OF PROSEP TECHNOLOGIES INC., THIS DRAWING REMAINS THE PROPERTY OF PROSEP TECHNOLOGIES INC., AND IS TO BE RETURNED ON DEMAND.

DRAWING	DESCRIPTION
0801-2-301	VESSEL DRAWING

- NOTES:
- ALL CONSTRUCTION TO BE IN ACCORDANCE WITH THE LATEST EDITION OF THE AISC MANUAL.
 - ALL WELDS TO BE 3/16" FILLET UNLESS NOTED. SEAL WELD ALL OPEN JOINTS.
 - BAND EDGES OF GRATING PANELS WITH 1"x3/16" BAR (17)
 - HOT DIP GALVANIZE GRATING PANELS, LADDER, & HANDRAIL AFTER FABRICATION.
 - ATTACH GRATING PANELS TO SKID WITH SADDLE ANCHORS & 1/4"x1 3/4" HEX HD SELF TAPPING MACH SCREWS. (15)(16)

NO	BY	DATE	DESCRIPTION	CHK'D	APP'D
1	JCB	07/MAY/08	REVISED PER CUSTOMER COMMENTS	BN	BN
0	JCB	10/MAR/08	ISSUED FOR CONSTRUCTION	HFM	BN
C	HFM	18/JAN/08	REVISED PER CUSTOMER COMMENTS	BN	BN
B	JCB	17/SEP/08	REISSUED FOR APPROVAL	HFM	BN
A	JCB	23/7/08	ISSUED FOR APPROVAL	HM	BN

DATE	DESCRIPTION	CHK'D	APP'D
23/7/08	REVISED PER CUSTOMER COMMENTS	BN	BN
23/7/08	ISSUED FOR CONSTRUCTION	HFM	BN
23/7/08	REVISED PER CUSTOMER COMMENTS	BN	BN
23/7/08	REISSUED FOR APPROVAL	HFM	BN
23/7/08	ISSUED FOR APPROVAL	HM	BN

DRWING: Jc Berry	DATE: 23/7/08
CHECKED: MURRAY	DATE: 23/7/08
ENG. APPROVED: NEAL	DATE: 23/7/08
SCALE: 1/2" = 1'-0"	

ProSep
TECHNOLOGIES, inc. Houston, Texas

BPXA ZPAD GAS
PARTIAL PROCESSING (GPP)

1st STAGE SUCTION SCRUBBER
VS-26001
PLATFORM DETAILS

JOB NO: 0801 DRAWING NO: 0801-2-401 REV: 1