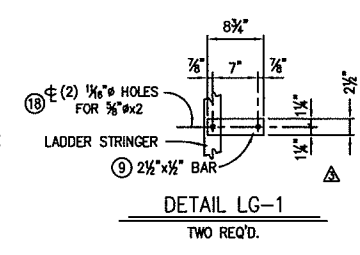
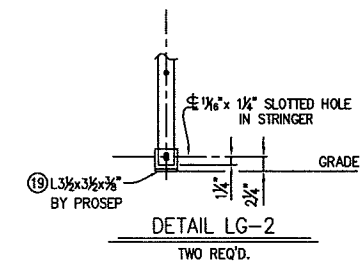
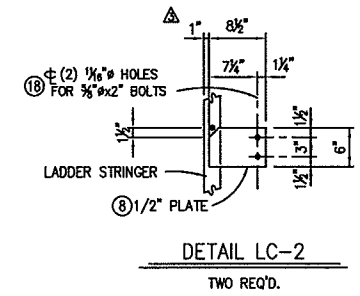
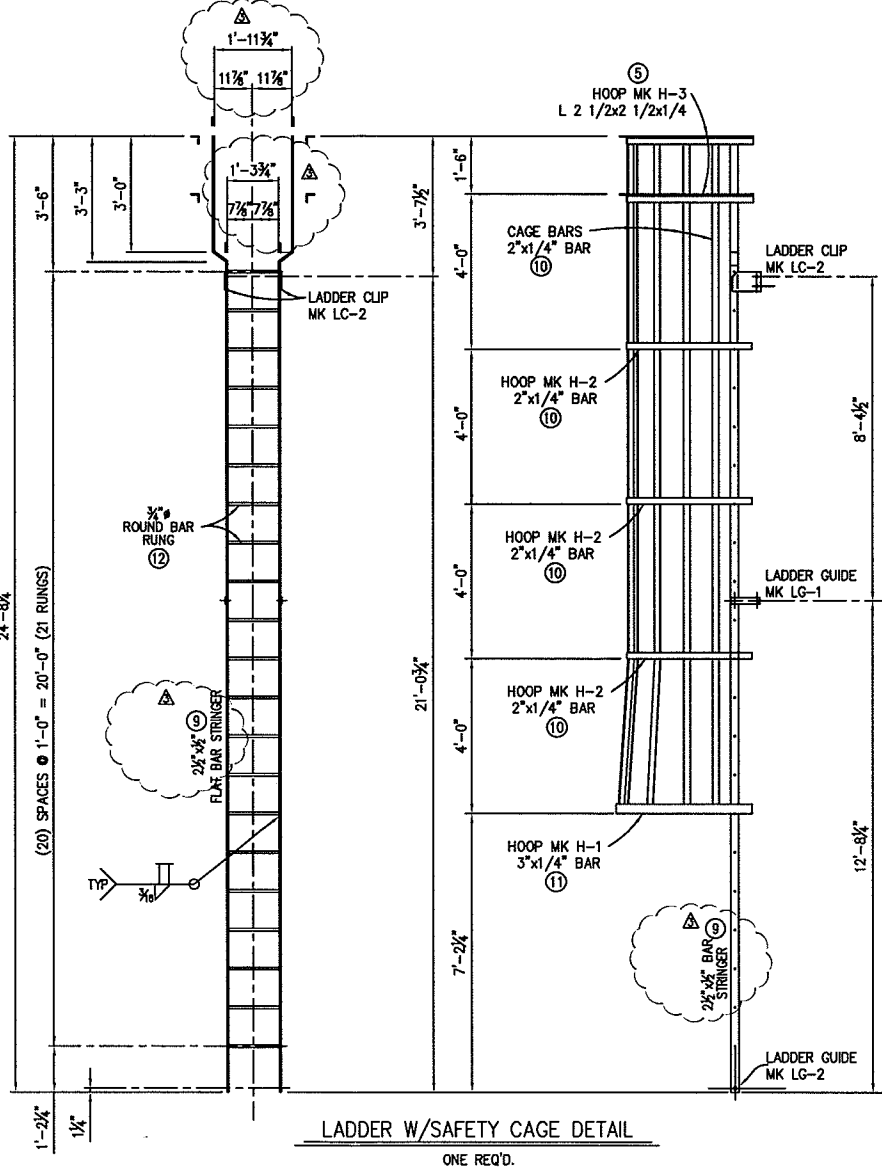


**WorleyParsons**  
resources & energy

Reviewed by: Kin Tjenden DATE: 07/27/09

Purchaser's review and/or release for fabrication shall not be construed as relieving seller of any obligation or responsibilities with respect to these documents of the items to be furnished by seller pursuant thereto.

VC RELEASED FOR FABRICATION - CORRECT AND RESUBMIT  
 VF FINAL - DO NOT RESUBMIT  
 VI FINAL - INFORMATION ONLY  
 VN NOT RELEASED FOR FABRICATION - CORRECT AND RESUBMIT  
 VM FINAL, MANUAL(S) - NOT RETURNED TO VENDOR  
 VEF FINAL - ELECTRONIC FILES  
 VV VOID - SEE COMMENTS ON DOCUMENTS  
 E0 DO NOT ISSUE THIS REVISION SUPERCEDED BY ANOTHER REVISION



THIS DRAWING AND ITS DESIGN ARE THE EXCLUSIVE PROPERTY OF PROSEP TECHNOLOGIES INC., AND SHALL NOT BE DISCLOSED OR REPRODUCED IN ANY MANNER WITHOUT THE PERMISSION OF PROSEP TECHNOLOGIES INC., THIS DRAWING REMAINS THE PROPERTY OF PROSEP TECHNOLOGIES INC., AND IS TO BE RETURNED ON DEMAND.

DRAWING	DESCRIPTION
0801-1-401	PLATFORM PLAN
	REFERENCE DRAWINGS

- NOTES:
- ALL CONSTRUCTION TO BE IN ACCORDANCE WITH THE LATEST EDITION OF THE AISC MANUAL.
  - ALL WELDS TO BE 3/16" FILLET UNLESS NOTED. SEAL WELD ALL OPEN JOINTS.
  - BAND EDGES OF GRATING PANELS WITH 1 1/4"x1/8" BAR (14)
  - HOT DIP GALVANIZE GRATING PANELS, LADDER, & HANDRAIL AFTER FABRICATION.
  - ATTACH GRATING PANELS TO SKID WITH TYPE CB SADDLE ANCHORS & 1/4"x1 3/4" HEX HD SELF TAPPING MACH SCREWS. (15)(16)
  - ALL STRUCTURAL STEEL SUBJECT TO A LOW TEMPERATURE ENVIRONMENT ARE SUBJECTED TO IMPACT TESTING PER SPC-AK-04-902.

STAMPS:

3	BN	16/MAY/09	REVISED LADDER STRINGER	HFM	BN
2	JCB	05/MAY/09	REVISED TO ADD LG-2 MATERIAL	BN	BN
1	JCB	31/MAR/09	REISSUED FOR CONSTRUCTION	HFM	BN
0	JCB	10/MAR/09	ISSUED FOR CONSTRUCTION	HFM	BN
A	JCB	19/JAN/09	ISSUED FOR APPROVAL	BN	BN

DRAWN:	Jc Berry	DATE:	06/AUG/08
CHECKED:	MURRAY	DATE:	
ENG. APPROVED:		DATE:	
SCALE:			
CAD FILE:			

**ProSep**  
TECHNOLOGIES, INC. Houston, Texas

BPXA ZPAD GAS  
PARTIAL PROCESSING (GPP)

INLET SEPARATOR  
VSP-Z6011  
PLATFORM LADDER DETAILS

JOB NO: 0801 DRAWING NO: 0801-1-405 REV: 3

DISC	PROJ#	P.O.	SEQ	SHT	REV	TAG
VND - VS	37305044-02	0019	00047	001	004	VSP-Z6011

80/4

A09

\*80

2.1