
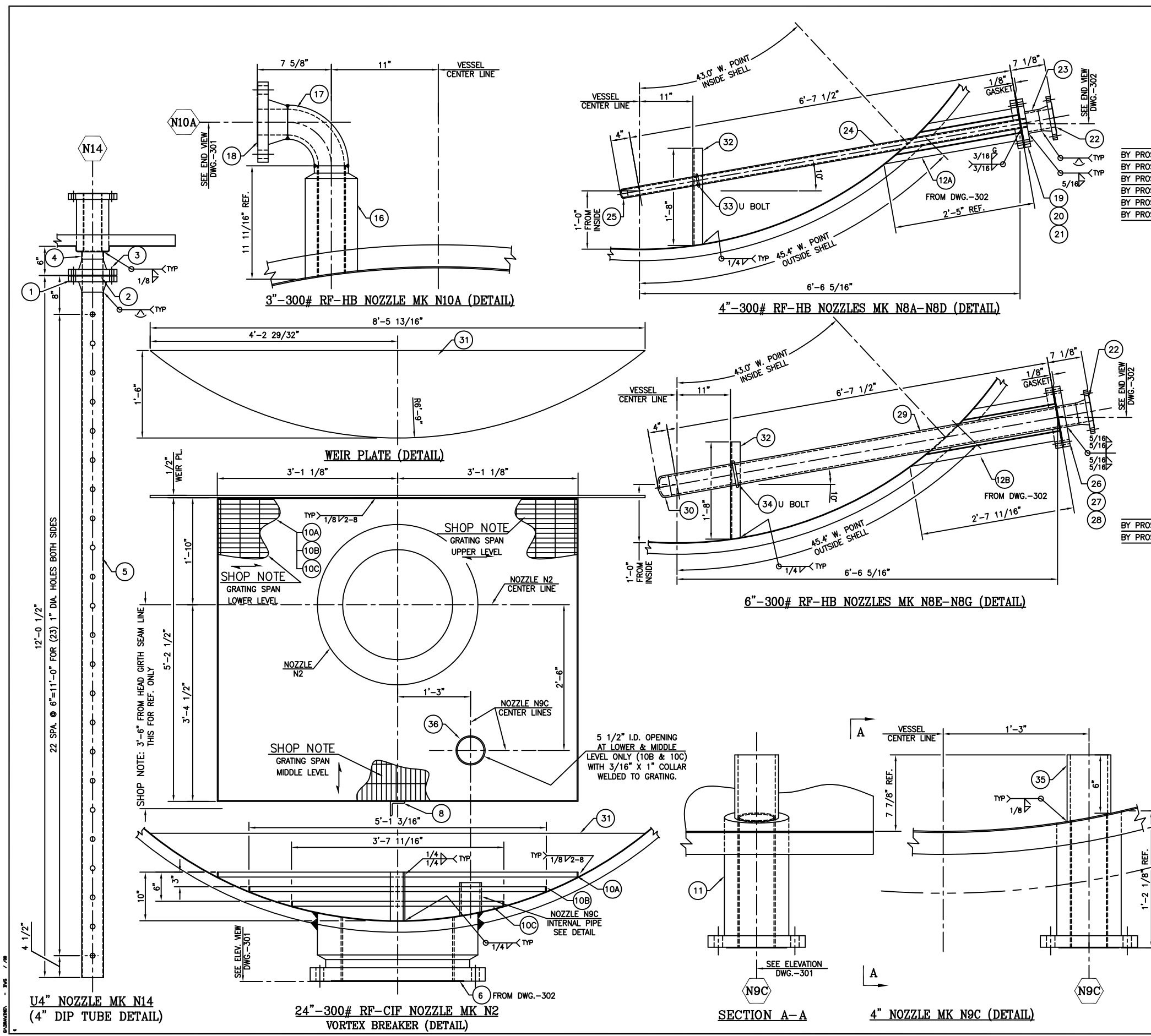
 WorleyParsons resources & energy	
<u>Kim Tjander</u>	<u>02/31/09</u>
REVIEWED BY	DATE
<small>Purchaser's review and/or release for fabrication shall not be construed as relieving either of any obligation or responsibilities with respect to these documents of the firm to be furnished by either pursuant to the A.O.</small>	
<input type="checkbox"/>	VC RELEASED FOR FABRICATION - CORRECT AND RESUBMIT
<input checked="" type="checkbox"/>	VF FINAL - DO NOT RESUBMIT
<input type="checkbox"/>	VI FINAL - INFORMATION ONLY
<input type="checkbox"/>	VN NOT RELEASED FOR FABRICATION - CORRECT AND RESUBMIT
<input type="checkbox"/>	VM FINAL, MANUAL(S) - NOT RETURNED TO VENDOR
<input type="checkbox"/>	VEF FINAL - ELECTRONIC FILES
<input type="checkbox"/>	VV VOID - SEE COMMENTS ON DOCUMENTS
<input type="checkbox"/>	EQ DO NOT ISSUE THIS REVISION SUPERCEDED BY ANOTHER REVISION

A05, A02, A01

VND.	DISC	PROJ#	P.O.	SEQ	SHT	REV	TAG
	VS	37305244-02	0019	00050	001	003	VSF-26011

83

2.0, 3.0



BILL OF MATERIALS:

ITEM	QTY.	DESCRIPTION:	MATERIAL
(1)	2	4"-300# RFWN FLANGE W/SCH. 10S BORE (NOZZLE 14 DIP PIPE FLG.)	SA-182 F-316L
(2)	1+2	GASKET FOR 4"-300# RF. FLG. (DIP PIPE GASKET)	BLUEGARD 3000#
(3)	8	3/4" DIA. X 3 3/4" LG. STUDS W/(2) H.H.NUTS EA. (DIP PIPES)	SA-193 88M/SA-194 8M
(4)	1	4" SCH. 10S PIPE X 2" LG. (DIP PIPE)	SA-312 TP 316L
(5)	1	4" SCH. 10S PIPE X 141 1/8" LG. (DIP PIPE)	SA-312 TP 316L
(6)		ITEM DELETED	
(7)		ITEM DELETED	
(8)	1	ANGLE 3" X 3" X 3/8" X 12 1/4" LG. (SEE DETAIL)	SA-479 316L
(9)		DELETED ITEM	
BY PROSEP	(10)	1 FLOOR GRATING (1" X 3/16" THK.) BEARING BARS X 62 1/2" W. X 74 3/16" LG. BANDED ALL SIDES WITH F.B. 1" X 3/16"	SA-479 316L
BY PROSEP	(10B)	1 FLOOR GRATING (1" X 3/16" THK.) BEARING BARS X 61 3/16" W. X 62 1/2" LG. BANDED ALL SIDES WITH F.B. 1" X 3/16"	SA-479 316L
BY PROSEP	(10C)	1 FLOOR GRATING (1" X 3/16" THK.) BEARING BARS X 62 1/2" W. X 43 11/16" LG. BANDED ALL SIDES WITH F.B. 1" X 3/16"	SA-479 316L
BY PROSEP	(11)	1 4"-300# RF-HB FLANGE X 15 1/2" (NOZZLE N9C) 1/8" MIN. OVERLAY INSIDE AND R.F.	SA-350 LF2 CLAD. MAT'L. 316L
(12)		DELETED ITEM	
(13)		DELETED ITEM	
(14)		DELETED ITEM	
(15)		DELETED ITEM	
(16)	1	FORGING 2.90" I.D. X 5.38" O.D. X 11 11/16" LG. (NOZZLE N10A)SEE DETAIL 1/8" MIN. OVERLAY INSIDE	SA-350 LF2 CLAD. MAT'L. 316L
(17)	1	3" SCH. 80S 90° L. RAD. ELBOW (NOZZLE N10A)	SA-403 WP 316/316L
(18)	1	3"-300# RFWN FLANGE W/SCH. 80S BORE (NOZZLE N10A)	SA-182 F 316/316L
(19)	4	4"-300# RF BLIND FLANGE (DRYWELL NOZZLES N8A-D)	SA-182 F-316L
(20)	4+8	GASKET FOR 4"-300# RF. FLANGE (DRYWELL NOZZLES N8A-D)	SEE MATERIALS
(21)	32	3/4" DIA. X LATER" LG. STUDS W/(2) H.H.NUT EA. (NOZZLES N8A-D)	SEE MATERIALS
(22)	7	4"-150# RFWN FLANGE W/SCH. 80S BORE (NOZZLES N8A-G DRYWELL)	SA-182 F-316L
(23)	4	4" SCH. 80S PIPE X 2 7/8" LG. (NOZZLES N8A-D)	SA-312 TP 316L
(24)	4	1 1/2" SCH. 80S PIPE X 83 5/8" LG. (NOZZLES N8A-D)	SA-312 TP 316L
(25)	4	1 1/2" SCH. 80S WELD-CAP (NOZZLES N8A-D)	SA-403 WP 316L
(26)	3	6"-300# RF BLIND FLANGE (DRYWELL NOZZLES N8E-G)	SA-182 F-316L
(27)	3+6	GASKET FOR 6"-300# RF. FLANGE (DRYWELL NOZZLES N8E-G)	SEE MATERIALS
(28)	36	3/4" DIA. X LATER" LG. STUDS W/(2) H.H.NUT EA. (NOZZLES N8E-G)	SEE MATERIALS
(29)	3	4" SCH. 80S PIPE X 85 1/2" LG. (NOZZLES N8E-G)	SA-312 TP 316L
(30)	3	4" SCH. 80S WELD-CAP (NOZZLES N8E-G)	SA-403 WP 316L
(31)	1	PL. 1/2" THK. X 18 1/4" X 102 1/4" LG. (WEIR PL.) SEE DETAIL	SA-240 316L
(32)	7	ANGLE 2" X 2" X 1/4" X 20" LG. (SEE DETAIL)	SA-479 316L
BY PROSEP	(33)	4 1 1/2" U BOLT X 3/8" DIA. X DETAIL W/(4) H.H.NUTS EA.	SA-193 88M/SA-194 8M
BY PROSEP	(34)	3 4" U BOLT X 1/2" DIA. X DETAIL W/(4) H.H.NUTS EA.	SA-193 88M/SA-194 8M
(35)	1	4" SCH. 80S PIPE X 7 1/4" LG. (NOZZLE N9C INTERNAL PIPE)	SA-312 TP 316L
(36)	2	PL. 3/16" THK. X 1" W. X 17 7/8" LG. (GRATING MK 10B & 10C COLLAR)	SA-240 316L
		ROLL ITEM 36 TO 5 1/2" I.D.	

VND-VS-37305244-02-0019-00050-001 Rev 003

REV.	DESCRIPTION	DATE	BY	APPROVED
3	REVISED PER CUSTOMER COMMENTS	07/21/09	SG	FS
2	REV. NOZZLE N9C DETAIL (ADD. 4" INTERNAL PIPE)	06/15/09	SG	FS
1	REV. PER CUSTOMER COMMENTS	04/07/09	SG	FS
0	ISSUED FOR FABRICATION	01/19/09	SG	FS/BN
A	ISSUED FOR APPROVAL	08/20/08	SG	FS

MFR. NAME: **R.C. TECHNICAL WELDING & FABRICATION, INC.**
 STREET / P.O. BOX: 12814 MULA LANE
 CITY: STAFFORD STATE: TEXAS ZIP: 77477
 TELEPHONE NO.: (281) 933-6004 FAX NO.: (281) 933-1548
 ENGINEERING CONTACT: FERMIN SANDOVAL P.O.: 2597
 MFR. SERIAL NO.: 11380 SHOP ORDER NO.: S/O 11380
 MFR. DWG. NO.: D-11380-3 REV.: 3



PROJECT: BPXA ZPAD GAS PARTIAL PROCESSING (GPP)
 TITLE: 162" I.D. x 50'-0" SM TO SM INLET SEPARATOR VSP-Z6011
 JOB NO: 0801 DRAWING NO: 0801-1-303 REV: 3