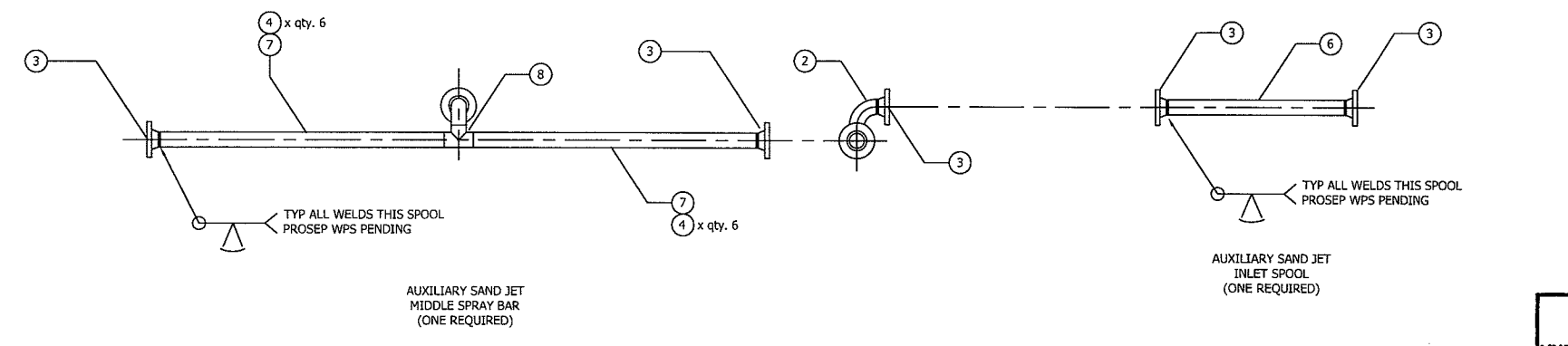
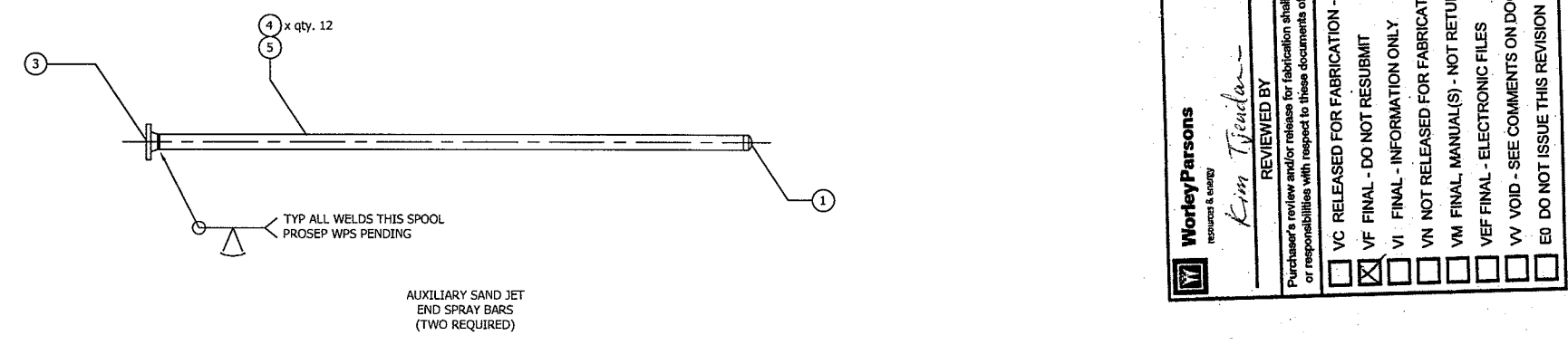
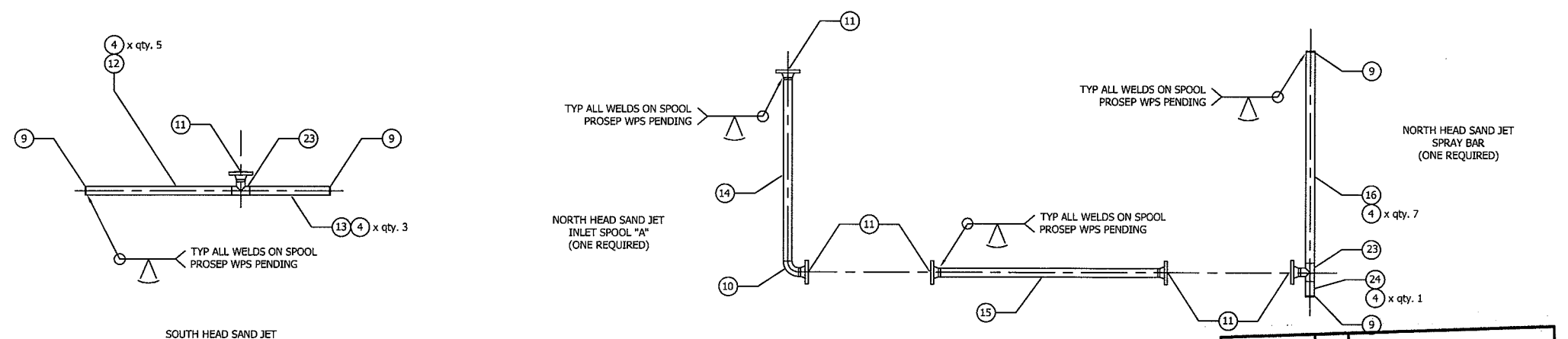


ITEM	QTY	DESCRIPTION
1	2	CAP, BW 3" SCH 80 SA-403 WP316L
2	1	ELBOW, LR 90 3" SCH 80 SA-403 WP316L
3	7	FLANGE, 3" 300# RFWN SCH 80 SA-182 F316L
4	212	LECHLER INC. FLAT SPRAY NOZZLE #670.803, 1/4" MNPT 40 DEGREEES
5	2	PIPE, 3" SCH 80 SMLS X 11'-2 7/8" LG. SA-312 TP316L
6	1	PIPE, 3" SCH 80 SMLS X 3'-2 3/4" LG. SA-312-TP316L
7	2	PIPE, 3" SCH 80 SMLS X 5'-5 1/2" LG. SA-312 TP316L
8	1	TEE, 3" SCH 80 SA-403 WP316L
9	52	PLATE, 1/2" THK. x 2 3/4" O.D. SA-240 316L
10	25	ELBOW, LR 90 2" SCH 80 SA-403 WP316L
11	46	FLANGE, 2" 300# RFWN SCH 80 SA-182 F316L
12	1	PIPE, 2" SCH 80 SMLS X 3'-4" LG. SA-312 TP316L
13	1	PIPE, 2" SCH 80 SMLS X 1'-10" LG. SA-312-TP316L
14	1	PIPE, 2" SCH 80 SMLS X 4'-8" LG. SA-312 TP316L
15	1	PIPE, 2" SCH 80 SMLS X 5'-0 1/8" LG. SA-312 TP316L
16	1	PIPE, 2" SCH 80 SMLS X 4'-10" LG. SA-312-TP316L
17	8	PIPE, 2" SCH 80 SMLS X 2'-0 3/8" LG. SA-312 TP316L
18	8	PIPE, 2" SCH 80 SMLS X 1'-1 3/4" LG. SA-312-TP316L
19	8	PIPE, 2" SCH 80 SMLS X 1'-11 3/4" LG. SA-312 TP316L
20	32	PIPE, 2" SCH 80 SMLS X 1'-7 1/2" LG. SA-312 TP316L
21	32	PIPE, 2" SCH 80 SMLS X 2'-2 1/2" LG. SA-312-TP316L
22	16	PIPE, 2" SCH 80 SMLS X 0'-6 9/16" LG. SA-312 TP316L
23	42	TEE, 2" SCH 80 SA-403 WP316L
24	1	PIPE, 2" SCH 80 x 4" LG. SA-312 316L

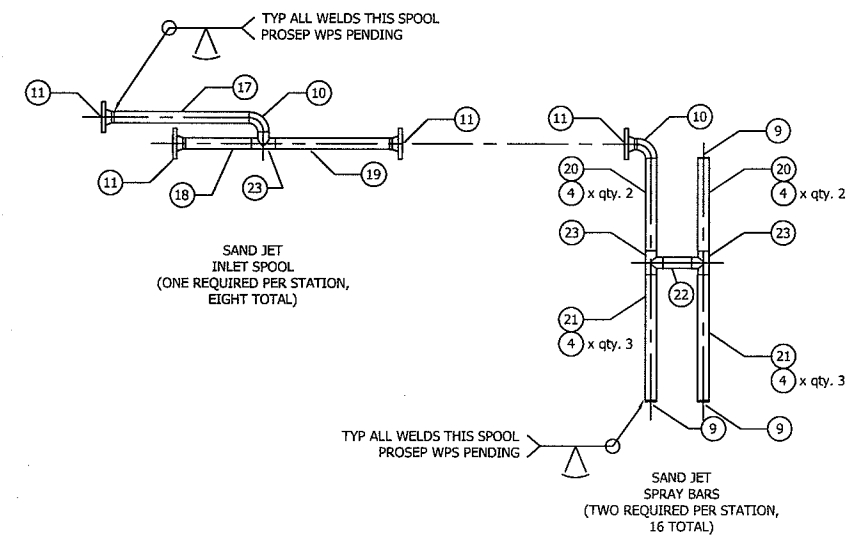


WorleyParsons
resources & energy

REVIEWED BY: *Kim Tjendal* DATE: 05/07/09

Purchaser's review and/or release for fabrication shall not be construed as relieving seller of any obligation or responsibility with respect to these documents of the items to be furnished by seller pursuant thereto.

VC RELEASED FOR FABRICATION - CORRECT AND RESUBMIT
 VF FINAL - DO NOT RESUBMIT
 VI FINAL - INFORMATION ONLY
 VN NOT RELEASED FOR FABRICATION - CORRECT AND RESUBMIT
 VM FINAL MANUAL(S) - NOT RETURNED TO VENDOR
 VEF FINAL - ELECTRONIC FILES
 VW VOID - SEE COMMENTS ON DOCUMENTS
 EO DO NOT ISSUE THIS REVISION SUPERCEDED BY ANOTHER REVISION



VND	DISC	PROJ#	P.O.	SEQ	SHT	REV	TAG
VS		37305244-02	0019	00056	001	001	vsp-26011

DRAWING	DESCRIPTION
0801-1-306	Inlet Separator Auxiliary & Head Sand Jet Details
0801-1-304	Inlet Separator Sand Jet Details

NOTES:

- All piping in accordance with ANSI B31.3, BPXA Specification SPC-AK-42-102, and Section II of WP PO no. 10741230-0019.
- Design Pressure: 250 psi
- Design Temperature: 300° F
- All Material to be in compliance with latest ed. of MR0175.
- RT 10%
- ALL SPRAY NOZZLES SECURED BY TACK WELD AFTER INSTALLATION.

NO	BY	DATE	DESCRIPTION	CHK'D	APP'D	SCALE:
0	JCB	06/APR/09	ISSUED FOR CONSTRUCTION	BN	BN	NA
A	BN	30 JAN 09	ISSUED FOR APPROVAL	BN	BN	

ProSep
TECHNOLOGIES, INC. Houston, Texas

BPXA ZPAD
GAS PARTIAL PROCESSING (GPP)
INLET SEPARATOR (VSP-Z6011)

WELD MAP
SAND JET PIPING

JOB NO: 0801-Prosop-WM
DRAWING NO: 5.1

Bot, Apz