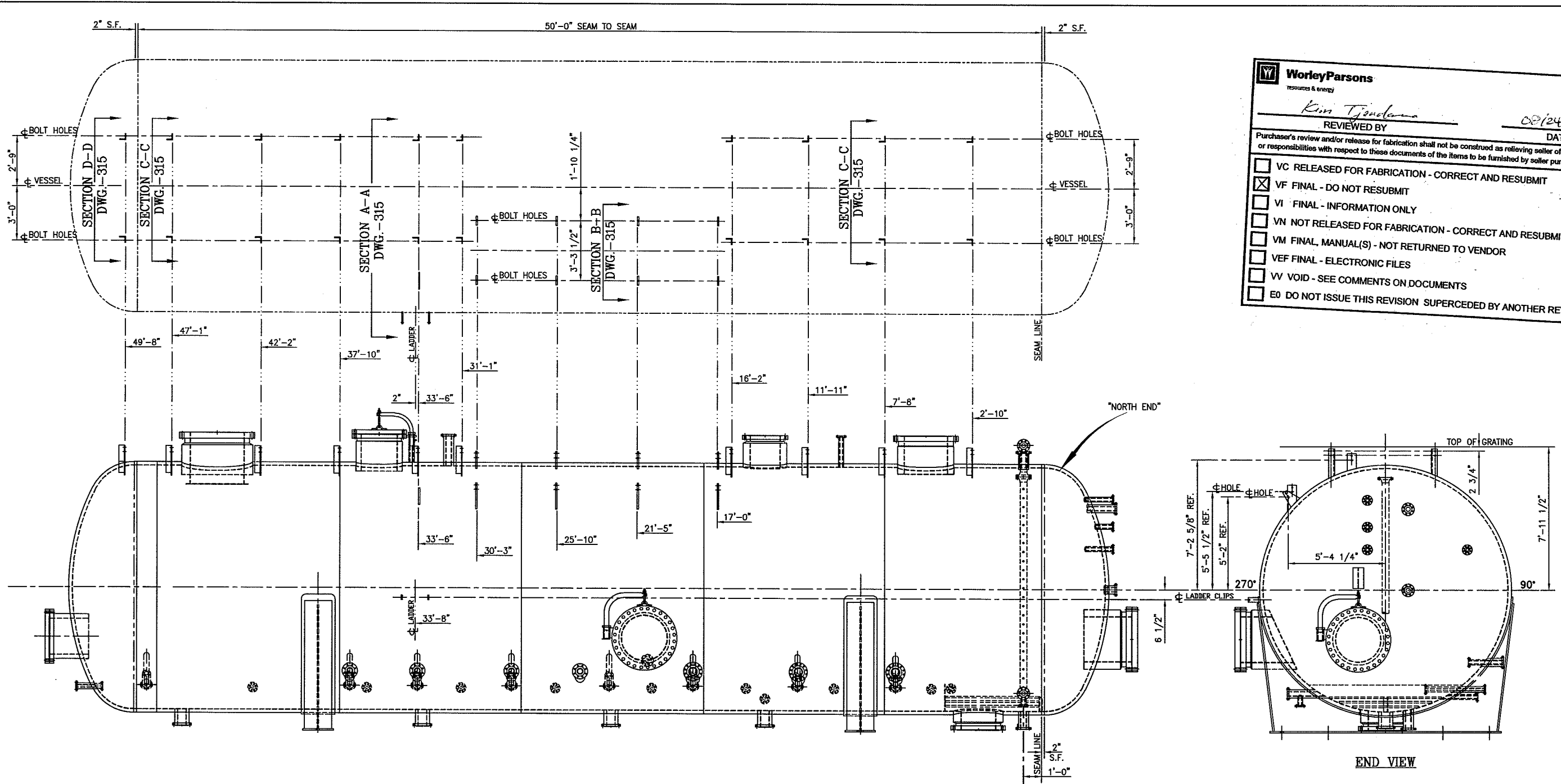


WorleyParsons
resources & energy

REVIEWED BY: *Kim Tjondana* DATE: 08/24/09

Purchaser's review and/or release for fabrication shall not be construed as relieving seller of any obligation or responsibilities with respect to these documents of the items to be furnished by seller pursuant thereto.

- VC RELEASED FOR FABRICATION - CORRECT AND RESUBMIT
- VF FINAL - DO NOT RESUBMIT
- VI FINAL - INFORMATION ONLY
- VN NOT RELEASED FOR FABRICATION - CORRECT AND RESUBMIT
- VM FINAL, MANUAL(S) - NOT RETURNED TO VENDOR
- VEF FINAL - ELECTRONIC FILES
- VV VOID - SEE COMMENTS ON DOCUMENTS
- E0 DO NOT ISSUE THIS REVISION SUPERCEDED BY ANOTHER REVISION



ELEVATION AND PLAN VIEW

WORKLINE
ALL TAIL DIMS ARE TO THIS LINE.
UNLESS OTHERWISE NOTED.

DISC	PROJ #	P.O.	SEQ	SHT	REV	TAG
VND-	RE 37305244-02	0019	00061	001	001	VSP-Z6011

*108

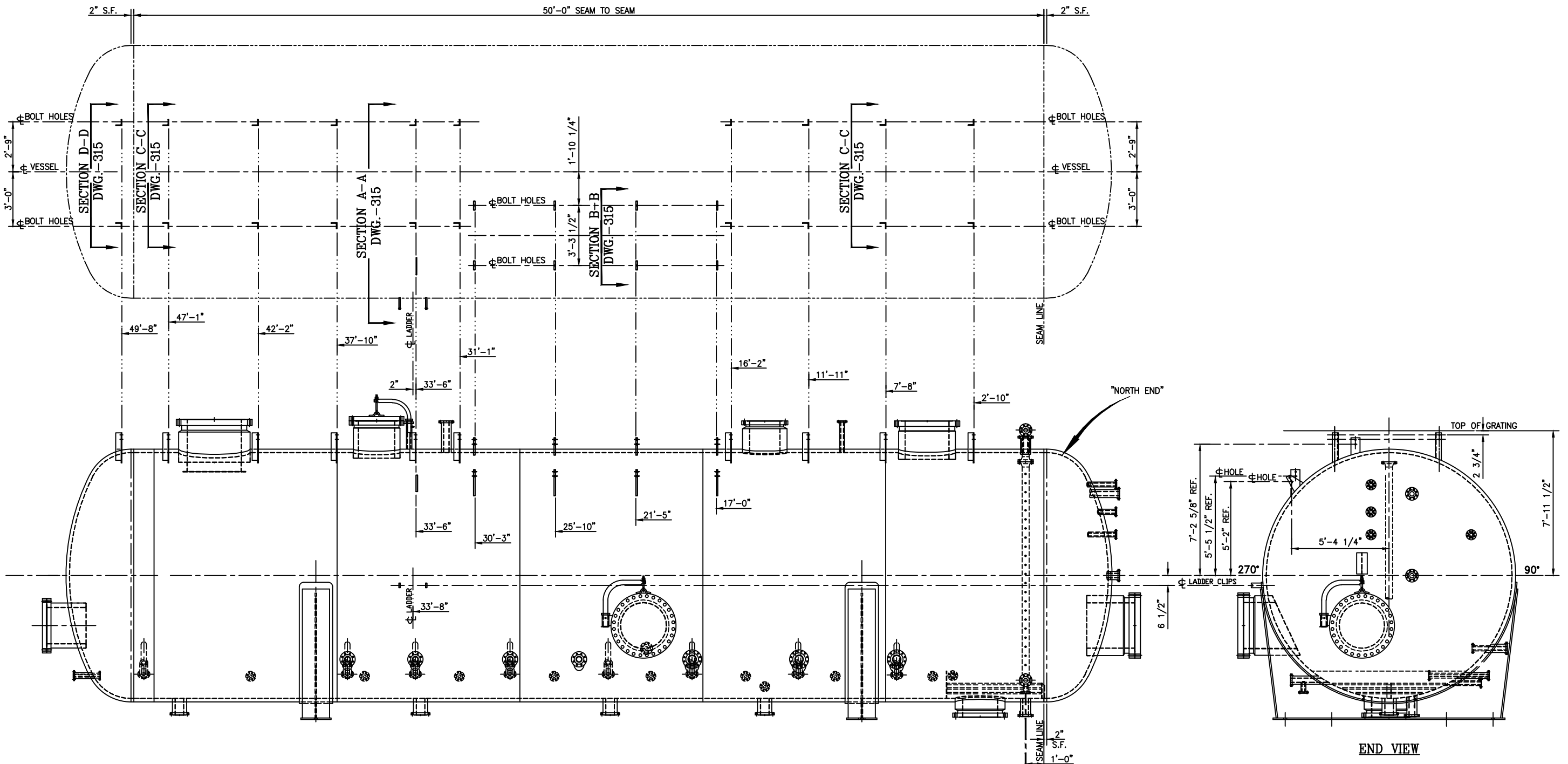
A04
2.01

REV.	DESCRIPTION	DATE	BY	APPROVED
0	ISSUED FOR FABRICATION	07/21/09	SG	FS
A	ISSUED FOR APPROVAL	07/01/09	SG	FS

MFR. NAME: R.C. TECHNICAL WELDING & FABRICATION, INC.
STREET / P.O. BOX: 12814 MULA LANE
CITY: STAFFORD STATE: TEXAS ZIP: 77477
TELEPHONE NO.: (281) 933-6004 FAX NO.: (281) 933-1548
ENGINEERING CONTACT: FERMIN SANDOVAL P.O.: 2597
MFR. SERIAL NO.: 11380 SHOP ORDER NO.: S/O 11380
MFR. DWG. NO.: D-11380-10 REV.: 0



PROJECT: BPXA ZPAD GAS PARTIAL PROCESSING (GPP)
TITLE: 162" I.D. x 50'-0" SM TO SM INLET SEPARATOR VSP-Z6011
JOB NO: 0801 DRAWING NO: 0801-1-314 REV: 0



ELEVATION AND PLAN VIEW

WORKLINE
ALL TAIL DIMS ARE TO THIS LINE.
UNLESS OTHERWISE NOTED.

END VIEW

VND-VS-37305244-02-0019-00061-001 Rev 001

REV.	DESCRIPTION	DATE	BY	APPROVED
0	ISSUED FOR FABRICATION	07/21/09	SG	FS
A	ISSUED FOR APPROVAL	07/01/09	SG	FS

MFR. NAME: R.C. TECHNICAL WELDING & FABRICATION, INC.
STREET / P.O. BOX: 12814 MULA LANE
CITY: STAFFORD STATE: TEXAS ZIP: 77477
TELEPHONE NO.: (281) 933-6004 FAX NO.: (281) 933-1548
ENGINEERING CONTACT: FERMIN SANDOVAL P.O.: 2597
MFR. SERIAL NO.: 11380 SHOP ORDER NO.: S/O 11380
MFR. DWG. NO.: D-11380-10 REV.: 0



PROJECT: BPXA ZPAD GAS PARTIAL PROCESSING (GPP)
TITLE: 162" I.D. x 50'-0" SM TO SM INLET SEPARATOR VSP-Z6011
JOB NO: 0801 DRAWING NO: 0801-1-314 REV: 0