
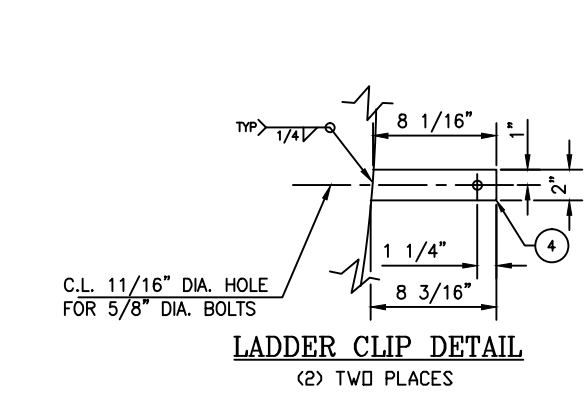
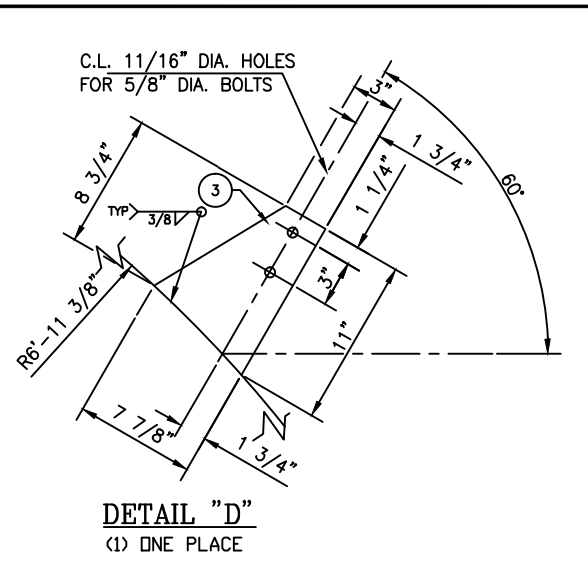
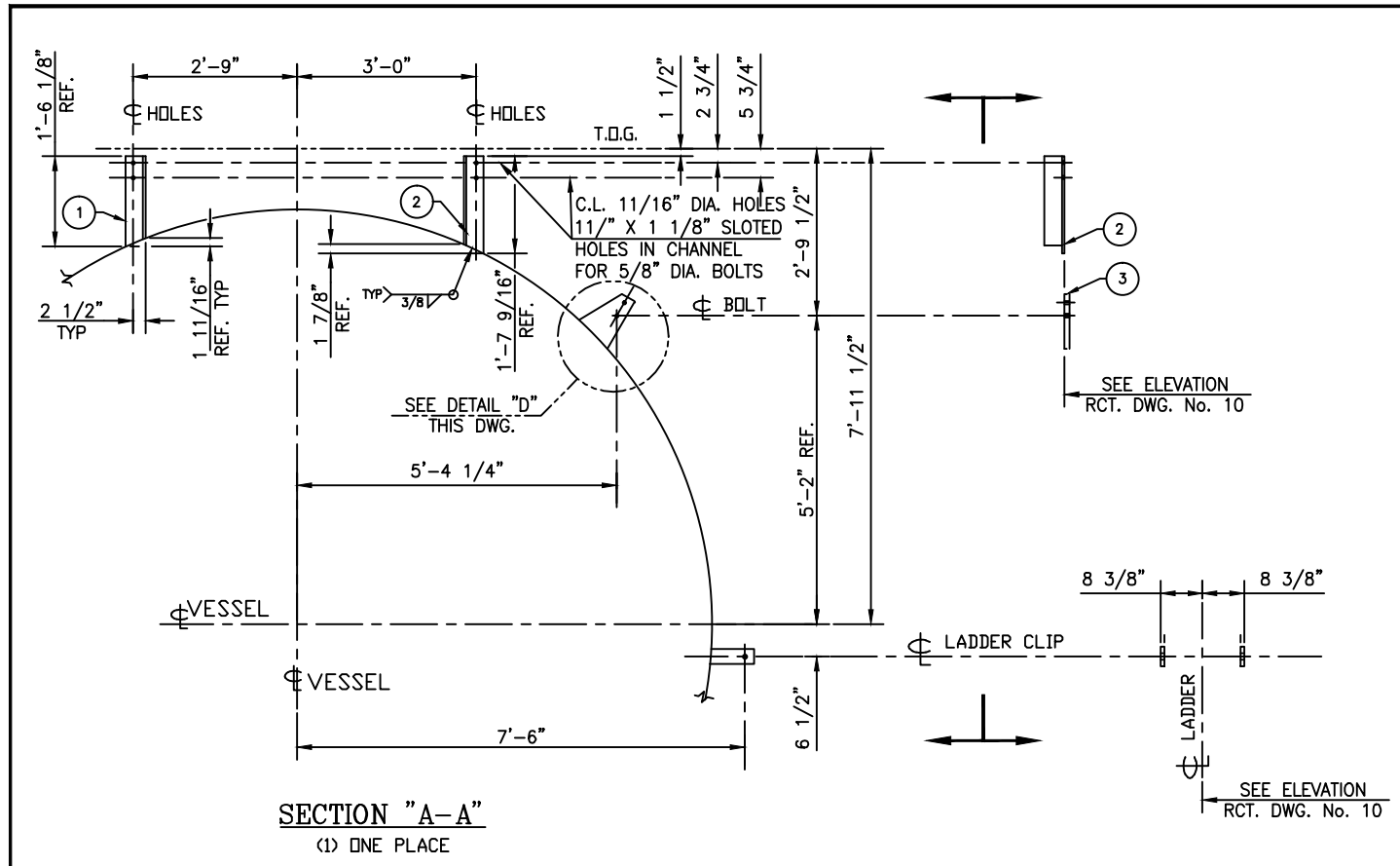
 WorleyParsons <small>RESOURCES & ENERGY</small>	
<u>Kim Tjalen</u>	<u>05/24/09</u>
REVIEWED BY	DATE
<small>Purchaser's review and/or release for fabrication shall not be construed as relieving either of any obligation or responsibilities with respect to these documents of the items to be furnished by seller pursuant thereto.</small>	
<input type="checkbox"/>	VC RELEASED FOR FABRICATION - CORRECT AND RESUBMIT
<input checked="" type="checkbox"/>	VF FINAL - DO NOT RESUBMIT
<input type="checkbox"/>	VI FINAL - INFORMATION ONLY
<input type="checkbox"/>	VN NOT RELEASED FOR FABRICATION - CORRECT AND RESUBMIT
<input type="checkbox"/>	VM FINAL, MANUAL(S) - NOT RETURNED TO VENDOR
<input type="checkbox"/>	VEF FINAL - ELECTRONIC FILES
<input type="checkbox"/>	VV VOID - SEE COMMENTS ON DOCUMENTS
<input type="checkbox"/>	EQ DO NOT ISSUE THIS REVISION SUPERCEDED BY ANOTHER REVISION

A04

VND.	DISC	PROJ#	P.O.	SEQ	SHT	REV	TAG
	VS	37305244-02	0019	06062	001	001	VSP-26011

*101

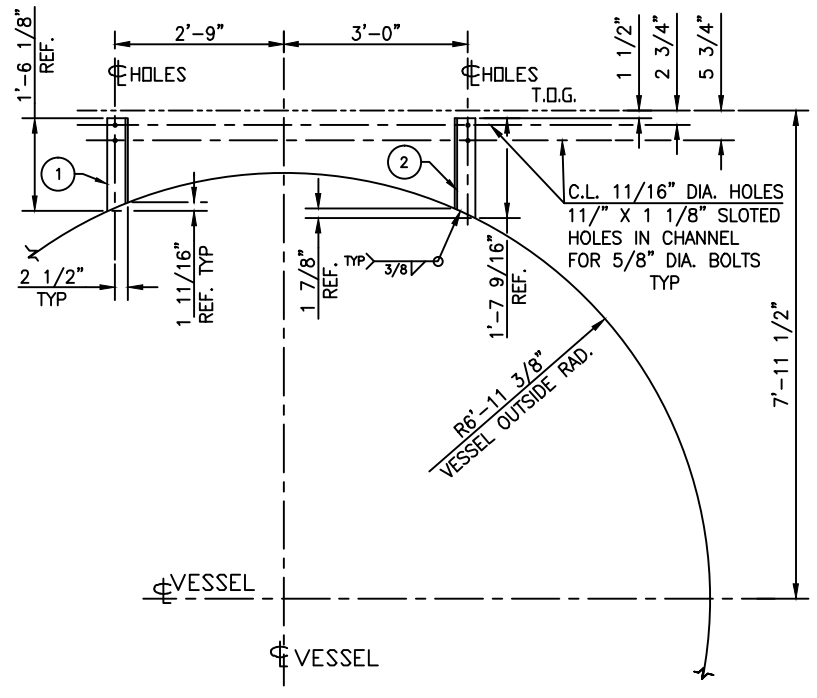
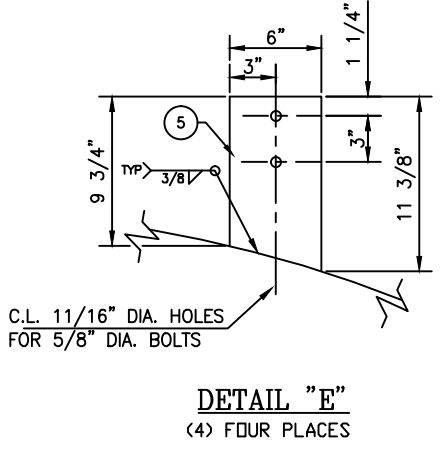
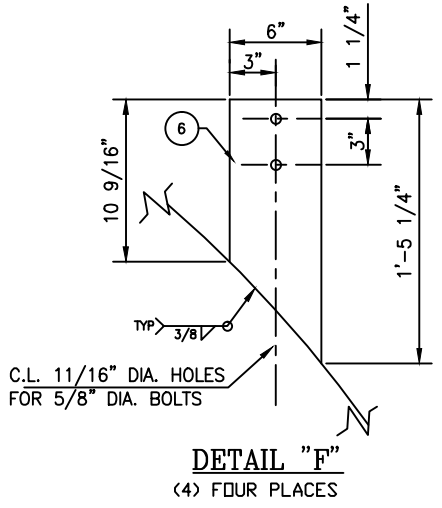
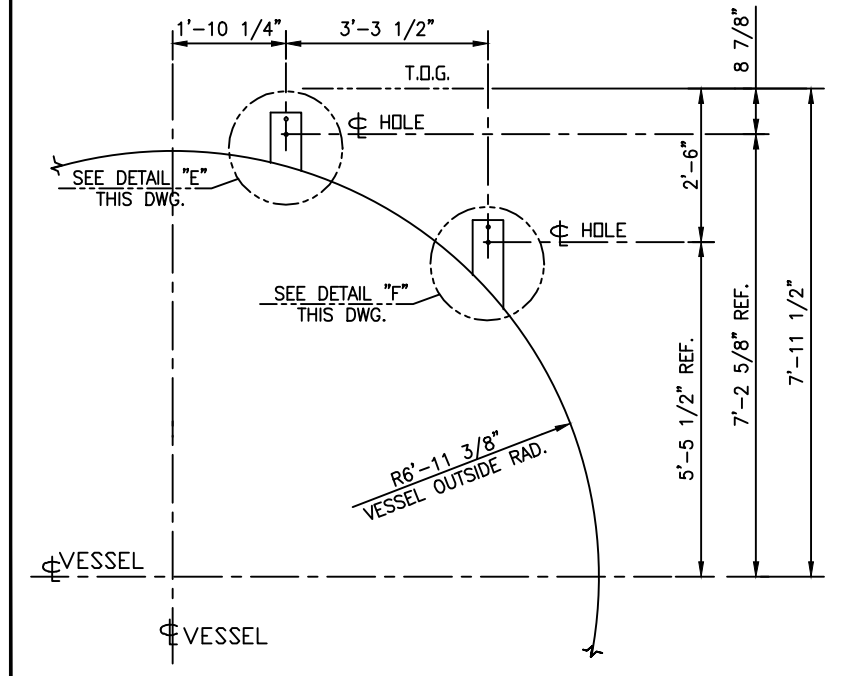
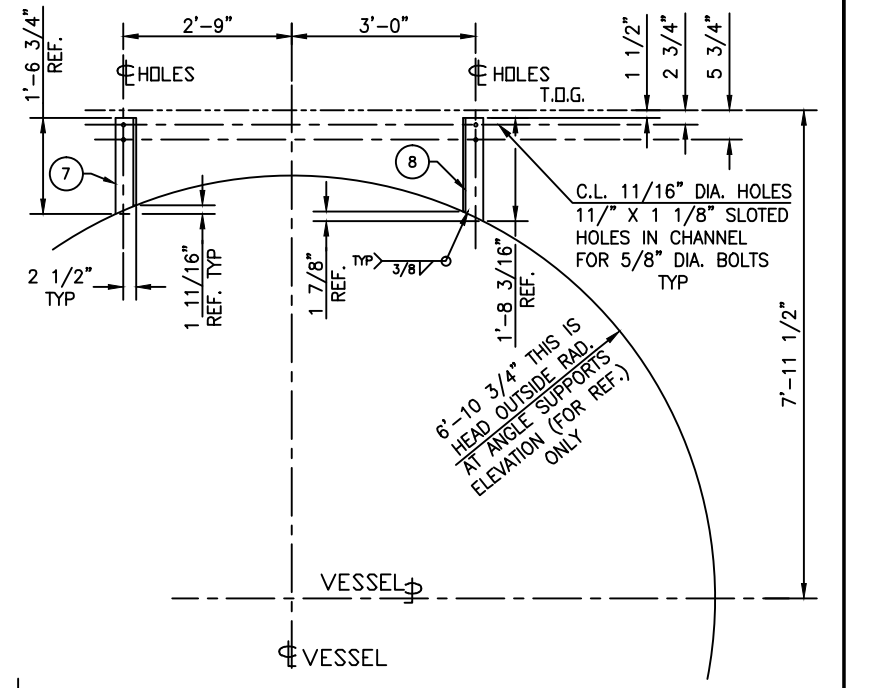
2.01



BILL OF MATERIALS FOR DWG. #1:

ITEM	QTY.	DESCRIPTION:	MATERIAL
①	10	ANGLE 4" X 4" X 1/2" THK. X 18 3/4" LG. (PLATFORM SUPPORTS) SEE DETAIL	SA-36
②	10	ANGLE 4" X 4" X 1/2" THK. X 20 3/16" LG. (PLATFORM SUPPORTS) SEE DETAIL	SA-36
③	1	PL. 1/2" THK. X 8 1/4" X 11 1/4" LG. (PLATFORM SUPPORT CLIP) SEE DETAIL	SA-516 70N
④	2	F.B. 2" X 3/8" THK. X 8 1/2" LG. (LADDER SUPPORT CLIPS) SEE DETAIL	SA-36
⑤	1	PL. 1/2" THK. X 6" X 12" LG. (PLATFORM SUPPORT CLIP) SEE DETAIL	SA-516 70N
⑥	1	PL. 1/2" THK. X 6" X 18" LG. (PLATFORM SUPPORT CLIP) SEE DETAIL	SA-516 70N
⑦	1	ANGLE 4" X 4" X 1/2" THK. X 20 1/4" LG. (PLATFORM SUPPORT) SEE DETAIL	SA-36
⑧	1	ANGLE 4" X 4" X 1/2" THK. X 21 3/4" LG. (PLATFORM SUPPORT) SEE DETAIL	SA-36

VND-VS-37305244-02-0019-00062-001 Rev 001



REV.	DESCRIPTION	DATE	BY	APPROVED
0	ISSUED FOR FABRICATION	07/21/09	SG	FS
A	ISSUED FOR APPROVAL	07/01/09	SG	FS

MFR. NAME: **R.C. TECHNICAL WELDING & FABRICATION, INC.**
 STREET / P.O. BOX: 12814 MULA LANE
 CITY: STAFFORD STATE: TEXAS ZIP: 77477
 TELEPHONE NO.: (281) 933-6004 FAX NO.: (281) 933-1548
 ENGINEERING CONTACT: FERMIN SANDOVAL P.O.: 2597
 MFR. SERIAL NO.: 11380 SHOP ORDER NO.: S/O 11380
 MFR. DWG. NO.: D-11380-11 REV.: 0

ProSep
 TECHNOLOGIES, INC. Houston, Texas

PROJECT: BPXA ZPAD GAS PARTIAL PROCESSING (GPP)

TITLE: 162" I.D. x 50'-0" SM TO SM INLET SEPARATOR VSP-Z6011

JOB NO: 0801 DRAWING NO: 0801-1-315 REV: 0

SECTION "B-B"
(4) FOUR PLACES

DETAIL "E"
(4) FOUR PLACES

SECTION "C-C"
(9) NINE PLACES